



2025 FALL BEEF SIRE DIRECTORY



YOUR SUCCESS *Our Passion.*

the BEEF TEAM



Lorna Marshall
Vice President, Beef Program
(719) 342-8984
lmarshall@selectsires.com



Brian House
Vice President, Beef
Product Manager
(614) 733-3420
bhouse@selectsires.com



Ryan Bodenhausen
AVP, Beef Acquisition and Marketing
(785) 221-3284
rbodenhausen@selectsires.com



Adalyn Caudill
Beef Program Administrator
(614) 733-3426
acaudill@selectsires.com



Mark Johnson
LCT Director of Beef and
Dairy Supply Chains
(605) 212-2387
mjohnson@selectsires.com



Lauren Kimble
Manager of ProfitSOURCE®
Supply Chains
(614) 623-2700
lkimble@selectsires.com



Sarah Quallen
Supply Chain and LCT
Logistics Coordinator
(614) 873-4683
squallen@selectsires.com



Darcy Krick
Beef Multimedia Specialist
(605) 680-3649
dkrick@selectsires.com



Karen Bockenstedt
Beef Marketing Coordinator
(513) 257-1672
khiltbrand@selectsires.com



Doug Harris
Beef Program Consultant
(804) 332-1456
dharris@selectsires.com



Joe Myers
Beef Sire Analyst
jmyers@selectsires.com



Jon Herrick
Beef Sire Analyst
(308) 627-6431
jherrick@selectsires.com



Brent Thiel
Beef Sire Analyst
bthiel@selectsires.com



Clint Sexson
Large Herd Beef Specialist
(541) 609-0167
csexton@ssmcoop.com



Dan Busch
Reproductive and Research Specialist
(573) 289-2058
dbusch@selectsires.com



Levi Killian
Beef Data Analyst
(970) 699-2173
lkilian@selectsires.com

LCT = Low Carbon Technologies

the TABLE OF CONTENTS

NEW ANGUS SIRES	3	RED ANGUS SIRES	39
ANGUS SIRES	4	OTHER RED ANGUS SIRES	41
OTHER ANGUS SIRES	25	GELBVIEW SIRES	41
TEAT AND UDDER SCORE	26	HEREFORD SIRES	42
SYNCH PROTOCOLS	28	OTHER HEREFORD SIRES	45
SEXED SEMEN LIST	30	OTHER CHAROLAIS SIRES	45
NEW OTHER BREED SIRES	31	CHAROLAIS SIRES	46
SIMMENTAL SIRES	32	BEEF SPECIALISTS	47
OTHER SIMMENTAL SIRES	38		

Cover Image: CRAFTSMAN photo taken by Kate Roberts

NEW ANGUS SIRES



7AN861
PURSUIT



7AN843
MEMPHIS



7AN875
CORNHUSKER



7AN851
CONTRACTOR



7AN877
ROBUST



7AN861 POSS

PURSUIT

\$50



AAA: 20909438

DOB: 2/3/24

TAT: 4122

FROM: Poss Angus, NE and
Stellpflug Cattle Company, WY

SIRE: SCHIEFELBEIN GABLE 311
FROSTY ELBA LIZZY 5569

DAM: POSS BLACKCAP 7152
POSS BLACKCAP 3511



SCAN
HERE



- > Multi-trait improvement at its best! In our quest to acquire and market sires that drive profit for our customers, PURSUIT sorts right to the top for adding value at every stage of production.
- > Built from proven genetics with cow power throughout his pedigree. His dam is a true gem with excellent phenotype, coupled with a 363-day calving interval and has recorded 6 calves at weaning for a 109 ratio.
- > PURSUIT is the standard for structural integrity and will capture your eye from every angle. He stands on a solid foot with extra depth of heel and straight edged claw placement. Very well balanced with a tremendous hip and rear leg while exhibiting muscle shape through his top and rear quarter.



PURSUIT'S dam

\$Values		
\$M	123	1
\$W	110	1
\$F	106	30
\$G	64	35
\$B	170	30
\$C	343	10

EPDs as of 7/22/25														Production										Maternal										Carcass					
	CED	BW	WW	YW	RADG	DMI	YH	SC	DOC	Claw	Angle	PAP	HS	HP	CEM	UDDR	TEAT	Milk	MW	MH	\$EN	CW	Marb	RE	Fat	\$AxH	\$AxJ												
EPD	11	.5	94	159	.29	1.9	.7	1.66	20	.26	.42	.90	.14	16.1	10	.63	.83	.34	73	.70	-.26	73	.87	.79	.038	179	180												
Acc	.36	.55	.48	.43	.31	.31	.52	.48	.45	.34	.35	.26	.31	.18	.3	.31	.32	.30	.37	0.4	-	.39	.37	.36	.34	-	-												
Rank	15	35	3	5	25	90	35	19	50	1	25	45	5	2	30	30	10	10	50	30	70	15	40	40	70	20	15												

7AN768 STELLPFLUG HOFFMAN **RISEABOVE** \$30

AAA: 20516965

DOB: 12/24/21

TAT: 2008



SCAN
HERE



TEHAMA TAHOE B767

SIRE: HOFFMAN STAGECOACH 1908

BSG COUNTLESS 1705 OF 028

BAR R JET BLACK 5063

DAM: HOFFMAN 3210 RITA LADY 0256

HA RITO LADY 3839



RISEABOVE son, Hoffman Ranch, NE



RISEABOVE daughter, Stellpflug Cattle Co, WY

- > One of the most sought-after sires in 2023, and continues to build popularity based on his progeny. They have extra vigor, eye appeal, and early performance.
 - > He offers exceptional growth while improving both phenotype and foot quality.
 - > An attractive bull with added muscle shape and length of body, and depth of rib.
 - > A unique sire that offers phenotype, performance, and maternal excellence in one package.
- From: STgenetics, TX; Stellpflug Cattle Co, WY and Hoffman Ranch, NE

\$Values		
\$M	116	1
\$W	102	1
\$F	111	25
\$G	50	50
\$B	162	35
\$C	326	10

EPDs as of 7/22/25														Production										Maternal								Carcass					
	CED	BW	WW	YW	RADG	DMI	YH	SC	DOC	Claw	Angle	PAP	HS	HP	CEM	UDDR	TEAT	Milk	MW	MH	\$EN	CW	Marb	RE	Fat	\$AxH	\$AxJ										
EPD	5	1.3	92	143	.24	1.23	.40	.99	22	.45	.32	2.84	.20	16	6	.45	.49	26	52	.10	-11	72	0.54	0.74	-.007	152	127										
Acc	.75	.91	.85	.60	.37	.37	.52	.65	.39	.49	.37	.26	.30	.19	.31	.31	.32	.32	.42	.43	-	.47	.37	.37	.34	-	-										
Rank	60	55	3	15	60	60	60	45	35	35	2	85	10	2	70	70	60	50	70	75	40	10	60	40	25	20	30										

7AN773 DEEP CREEK **SQUARE DEAL** \$30

AAA: 20509700

DOB: 1/5/22

TAT: 215



SCAN
HERE



WOODHILL BLUEPRINT

SIRE: MYERS FAIR-N-SQUARE M39

MYERS MISS BEAUTY M136

RBM STEP AHEAD C80

DAM: DEEP CREEK STEP LASS 064

DEEP CREEK TOTAL LASS 701



SQUARE DEAL son,
Bruner Angus Ranch, ND



SQUARE DEAL son,
Deep Creek Angus Ranch, SD

- > SQUARE DEAL progeny are living up to expectations! They offer extra frame and length, depth of body, correctness and great foot quality.
- > His maternal line is stacked with generations of Pathfinder cows and impressive performance ratios. SQUARE DEAL himself posted a 173 ratio for IMF and 107 for REA.
- > Being backed by a proven cow family, it was no surprise SQUARE DEAL came out as a breed leader for Functional Longevity. He also is a leader for HP, CLAW, ANGLE and \$M.

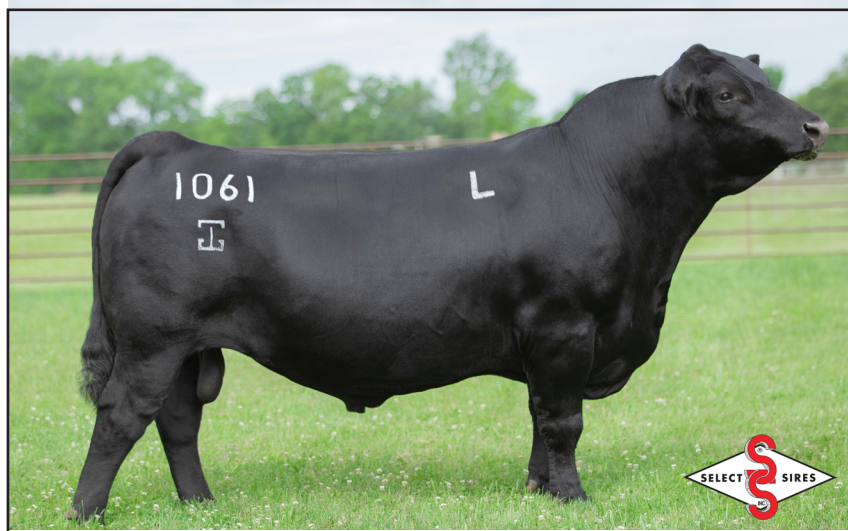
From: Deep Creek Angus Ranch, SD and Bruner Angus Ranch, ND

\$Values		
\$M	104	2
\$W	88	10
\$F	112	25
\$G	68	20
\$B	181	20
\$C	339	5

EPDs as of 7/22/25													Production										Maternal										Carcass					
EPD	7	.80	81	140	.28	1.37	.80	1.46	23	.33	.36	-.18	.57	15	7	.57	.39	30	65	.70	-20	64	.96	.80	.043	162	148											
Acc	.56	.83	.74	.63	.38	.38	.54	.63	.04	.52	.53	.27	.31	.22	.33	.32	.33	.35	.44	.43	-	.46	.40	.41	.37	-	-											
Rank	45	40	15	20	30	70	20	15	30	4	10	25	60	4	60	40	80	25	50	25	60	25	20	30	80	20	20											

7AN759 GAR FIREPROOF

\$30



AAA: 20370357

DOB: 9/5/21

TAT: L1061



SCAN
HERE

GAR SURE FIRE 6404

SIRE: GB FIREBALL 672
GB ANTICIPATION 432

GAR SURE FIRE

DAM: CHAIR ROCK SURE FIRE 6095
CHAIR ROCK PROGRESS 3005



FIREPROOF son, GAR FIREMAN



FIREPROOF daughter,
Deer Valley Farms, TN

\$Values		
\$M	53	70
\$W	71	35
\$F	141	2
\$G	127	1
\$B	268	1
\$C	401	1

- > FIREPROOF offspring last fall and this spring have been dominating sale reports! His consistency in type and kind, added muscle shape and foot quality make them rise to the top.
- > He is a breed leader for MARB, \$B and \$C, with the added extras of Docility, ANGLE, PAP and HS.
- > With over 500 ultrasound records, FIREPROOF is ratioing 103 for IMF validating his top 1% ranking for MARB.
- > His sire is powerfully constructed and has left his mark on the Angus breed by siring extra pounds and performance.

From: Gardiner Angus Ranch, KS; MI-HUD Angus, ID; Goode Angus and Richardson Cattle Company, TX

EPDs as of 7/22/25														Production										Maternal										Carcass					
	CED	BW	WW	YW	RADG	DMI	YH	SC	DOC	Claw	Angle	PAP	HS	HP	CEM	UDDR	TEAT	Milk	MW	MH	\$EN	CW	Marb	RE	Fat	\$AxH	\$AxJ												
EPD	10	1.5	68	137	.38	1.2	.40	.81	24	.56	.42	-2.18	-12	10.5	11	.39	.43	37	76	0.6	-29	75	2.15	.90	.046	301	243												
Acc	.80	.92	.87	.62	.46	.46	.88	.84	.58	.48	.46	.29	.75	.22	.31	.31	.32	.31	.42	.42	-	.51	.46	.48	.42	-	-												
Rank	25	55	45	25	1	60	60	55	25	80	25	3	1	65	25	85	75	3	40	35	80	10	1	20	80	1	2												

7AN795 B&B PREEMINENT

\$30



AAA: 20500166

DOB: 11/22/22

TAT: 2T15



SCAN
HERE

GAR MOMENTUM

SIRE: GAR TRANSCENDENT
GAR PROPHET 2685

GB FIREBALL 672

DAM: B&B 0F04 OF 6528XFIREBALL
2 BAR PARTNER 6528

- > When it comes to marbling and \$C, PREEMINENT stands alone as the only sire at that level among current sires!
- > PREEMINENT is deep, moderate framed, very correct and early calf reports indicate he will sire that same appealing phenotype.
- > While PREEMINENT is in a league of his own for MARB and REA, he also excels for often overlooked traits such as HS, CEM, TEAT and UDDR.

From: B & B Cattle, FB Genetics, Steve Hillhouse, Goode Angus and Richardson Cattle Co., TX; Gardiner Angus Ranch and RMS Cattle LLC, KS, Quanah and Greta Gardiner, WA and Rocking W Angus, GA

\$Values		
\$M	50	75
\$W	64	50
\$F	135	3
\$G	156	1
\$B	292	1
\$C	429	1

EPDs as of 7/22/25														Production										Maternal										Carcass					
	CED	BW	WW	YW	RADG	DMI	YH	SC	DOC	Claw	Angle	PAP	HS	HP	CEM	UDDR	TEAT	Milk	MW	MH	\$EN	CW	Marb	RE	Fat	\$AxH	\$AxJ												
EPD	8	2.3	85	148	.29	1.95	.80	.85	18	.50	.45	2.50	.00	10.8	14	.73	.67	15	110	1.1	-.34	84	2.49	1.55	-.013	348	332												
Acc	.47	.69	.44	.36	.28	.28	.42	.37	.34	.27	.27	.22	.29	0.17	0.29	.28	.29	0.29	.34	.36	-	.37	.36	.35	.33	-	-												
Rank	40	75	10	10	25	95	20	55	55	55	35	80	1	60	10	10	25	95	10	5	85	3	1	1	20	1	1												

7AN805 GAR **POWERCAT**

\$40

AAA: 20665222

DOB: 10/9/22

TAT: 1652G



SCAN
HERE



GAR DISCOVERY 6737H

SIRE: E&B WILDCAT 9402

E&B LADY PLUS 643

GB FIREBALL 672

DAM: DALTONS RITA 0206

DALTONS RITA 8225



- > As an outcross for many, POWERCAT offers exceptional genetic value for traits that pay the bills. If you truly want to change cattle, bulls like POWERCAT will make it happen. His top rankings for several traits will take you there.
- > POWERCAT's attributes line up in a big way – he's good for HP, CEM, Docility, HS and more!
- > Early progeny ratios indicate below average BW and above average growth, cornerstones for future success.

From: Gardiner Angus Ranch, KS; Ogeechee Angus Farm and Travis Bunch and Tall Timber Angus, GA and Deer Valley Farm, TN

\$Values		
\$M	59	55
\$W	71	35
\$F	128	10
\$G	112	1
\$B	241	1
\$C	372	2

EPDs as of 7/22/25														Production										Maternal										Carcass									
	CED	BW	WW	YW	RADG	DMI	YH	SC	DOC	Claw	Angle	PAP	HS	HP	CEM	UDDR	TEAT	Milk	MW	MH	\$EN	CW	Marb	RE	Fat	\$AxH	\$AxJ																
EPD	14	-1.1	75	146	.39	1.27	.70	0.83	25	.46	.48	.57	.02	13.5	11	.68	.69	26	100	0.7	-.35	71	1.66	1.22	-.023	277	265																
Acc	.56	.79	.56	.43	.34	.34	.52	.47	.38	.31	.31	.27	.34	.24	.33	.34	.35	.33	.40	.42	-	.43	.40	.39	.37	-	-																
Rank	5	10	30	15	1	60	30	55	25	40	50	40	2	15	25	15	20	50	15	25	90	15	2	4	15	1	1																

7AN793 GAR **HOME RUN**

\$40

AAA: 20508438

DOB: 9/4/22

TAT: 302G



SCAN
HERE



GAR ASHLAND

SIRE: GAR HOME TOWN

CHAIR ROCK SURE FIRE 6095

GB FIREBALL 672

DAM: WILLIAMS F BLACKBIRD 705-429

WILLIAMS BLACKCAP L 455-306



- > A goal in cattle breeding is to create a son better than the sire. HOME RUN has big shoes to fill but he's well on his way. He sports amazing figures for both growth performance and carcass merit!
- > Early calves by HOME RUN display an incredible amount of top, hip and rib dimension.
- > He is solid for CED and over +2.0 for Marbling which makes HOME RUN an easy choice for heifers of any breed.
- > With his superior end-product EPDs and strong visual advantage, HOME RUN is quickly climbing our Angus lineup customer satisfaction chart.

From: Gardiner Angus Ranch, KS; Ogeechee Angus Farm, GA and Justin Busenlehner, TX

\$Values		
\$M	52	70
\$W	89	10
\$F	152	1
\$G	137	1
\$B	290	1
\$C	428	1

EPDs as of 7/22/25														Production										Maternal										Carcass					
	CED	BW	WW	YW	RADG	DMI	YH	SC	DOC	Claw	Angle	PAP	HS	HP	CEM	UDDR	TEAT	Milk	MW	MH	\$EN	CW	Marb	RE	Fat	\$AxH	\$AxJ												
EPD	13	.40	90	164	.36	1.71	0.8	1.51	26	.65	.54	1.07	.21	10.1	16	.55	.53	26	105	0.9	-.38	89	2.18	1.32	-.005	343	329												
Acc	.46	.67	.48	.38	.33	.33	0.46	.40	.36	.30	.30	.29	.32	.24	.32	.33	.34	.33	.39	.41	-	.40	.38	.37	.35	-	-												
Rank	10	30	4	3	1	90	20	15	20	95	80	50	10	70	2	45	55	50	15	15	90	1	1	2	25	1	1												

7AN752 EWA **ELEVATE** 1166

\$25



AAA: 20225379

DOB: 10/5/21

TAT: 1166

FROM: Edgewood Angus LLC, VA; Oakdale Farms, GA;
Kaiser Angus, KS; Peterson Prime Angus Ranch
LLC, MO; Randy Hill, UT; H7 Ranch and 6 Mile
Angus, ND

SIRE: YON TOP CUT G730
YON SARAH D668

DAM: EWA 974 OF 290 TAHOE
EDGEWOOD 290 OF 892 NDAY454



SCAN
HERE



- > ELEVATE is the only sire over +18 HP and +380 \$C in the database.
- > He will add length, depth and quality with plenty of breed character. His progeny, both male and female have been very well received in the marketplace for their type and kind combined with their elite EPD profile.

EPDs as of 7/22/25

EPDs as of 7/22/25													Production										Maternal										Carcass									
	CED	BW	WW	YW	RADG	DMI	YH	SC	DOC	Claw	Angle	PAP	HS	HP	CEM	UDDR	TEAT	Milk	MW	MH	\$EN	CW	Marb	RE	Fat	\$AxH	\$AxJ	\$M	\$W	\$F	\$G	\$B	\$C									
EPD	8	1.4	83	140	.27	1.73	.50	1.57	22	.51	.53	1.29	.04	18.6	15	.62	.65	35	61	0.4	-21	71	1.38	1.34	-.045	236	235	112	98	104	101	206	379									
Acc	.55	.79	.71	.58	.38	.38	.65	.56	.47	.35	.34	.27	.34	.28	.33	.33	.35	.34	.43	.45	-.48	.43	.44	.40	-	-	-	-	-	-	-	-	-									
Rank	40	40	15	20	40	90	50	15	35	60	80	55	2	1	3	30	30	10	55	50	60	15	5	2	4	3	2	1	35	35	3	10	1									

7AN849 44 **TRANSPARENCY**

\$30



AAA: 20699254

DOB: 3/13/23

TAT: 2340

FROM: 44 Farms LLC, TX, Circle S Land &
Cattle Co., AR and JLB Ranch, KS

SIRE: CONNEALY CLARITY
BRESHIE OF CONANGA 6988
VAR DISCOVERY 2240

DAM: PF RITA 6507
BOBO RITA 4535



SCAN
HERE



- > One of the real hidden gems in our lineup, TRANSPARENCY offers a perfect blend of phenotype and genotype. He is a 6+ frame sire that offers extra depth of body and muscle mass to complement the extra frame.
- > He offers curve bending genetics with double digit CE and breed-leading growth.
- > Study his data close, he ranks in the top 25% or better for CE, WW, YW, SC, CLAW, HS, HP, MILK, CW, MARB and REA as well as all of the indexes.

EPDs as of 7/22/25

EPDs as of 7/22/25													Production										Maternal										Carcass									
	CED	BW	WW	YW	RADG	DMI	YH	SC	DOC	Claw	Angle	PAP	HS	HP	CEM	UDDR	TEAT	Milk	MW	MH	\$EN	CW	Marb	RE	Fat	\$AxH	\$AxJ	\$M	\$W	\$F	\$G	\$B	\$C									
EPD	12	0	86	153	.29	2.02	.70	1.42	22	.39	.42	2.15	.17	13	5	.56	.57	31	87	0.8	-31	71	1.69	1.10	.003	246	224	81	94	109	110	219	365									
Acc	.34	.50	.44	.39	.32	.32	.51	.47	0.35	.32	.35	.24	.31	.23	.33	.32	.33	0.33	.37	.38	-	.39	.38	.37	.35	-	-	-	-	-	-	-	-									
Rank	15	25	10	10	25	95	35	20	40	20	25	75	10	25	80	50	50	20	35	25	80	20	2	15	35	3	5	20	25	25	2	5	3									

7AN737 **VIRGINIA TECH STATESMAN** \$30



AAA: 20085208

DOB: 1/16/21

TAT: 11J3

FROM: Deer Valley Farm, TN
and Knoll Crest Farms Inc., VA
SS NIAGARA Z29

SIRE: TEHAMA PATRIARCH F028
TEHAMA ELITE BLACKBIRD D826
ELLINGSON HOMESTEAD 6030

DAM: VPI 310A RITA 9G6 ET
AED RITA 310A



SCAN
HERE



- > Defined as, "a skillful and respected leader," his calves are proving just that! Big-time growth with a stellar pedigree have him positioned for significance.
- > His offspring topped many sales this past spring and there's more to come. Strong, powerful, high-performance cattle with a great look are taking STATESMAN places!
- > Powerful progeny ratios: 100 for Birth and 102 for both Weaning and Yearling along with a 104 ratio for Marbling!

EPDs as of 7/22/25

EPDs as of 7/22/25													Production										Maternal										Carcass											
	CED	BW	WW	YW		DMI	YH	SC	DOCClaw	Angle	PAP	HS	HP	CEM	UDDR	TEAT	Milk	MW	MH	\$EN	CW	Marb	RE	Fat	\$AxH	\$AxJ	\$M	\$W	\$F	\$G	\$B	\$C												
EPD	5	1.4	85	159	.34	2.1	.80	.74	6	.57	.47	-1.19	.46	17.3	15	.51	.65	23	93	1	-30	76	1.23	0.67	.113	207	196	73	74	133	74	208	343											
Acc	.77	.93	.90	.85	.45	.45	.84	.85	.78	.74	.73	.36	.63	.29	.36	.38	.39	.33	.45	.45	-	.50	.46	.47	.41	-	-	-	-	-	-	-	-											
Rank	60	55	10	4	3	95	20	60	95	85	45	10	40	1	3	55	30	70	20	10	80	10	10	45	95	10	10	30	4	4	15	10	5											

7AN875 CONNEALY **CORNHUSKER** \$50

NEW



AAA: 20976416

DOB: 8/15/23

TAT: 369A



SCAN
HERE

KCF BENNETT SUMMATION

SIRE: KCF BENNETT CULMINATION
KCF MISS HOMESTEAD C452
SS NIAGARA Z29

DAM: BLACK CARY OF CONANGA 777
BLACK CASHI OF CONANGA 5143

- > The lead off bull and sale feature of the 2025 Connealy Angus Spring sale. CORNHUSKER is a phenotype standout that offers extra frame, power, and performance in a Calving Ease package.
- > This 6.1-frame bull had individual ratios of 110 at weaning and 109 at yearling in the Connealy herd.
- > He is backed by an eight-year-old highly productive 7AN388 NIAGARA daughter with an excellent udder and ratios of 103 at Weaning and 105 at Yearling.
- > Provides mating flexibility for daughters of many popular sires, including GROWTH FUND, HOMETOWN, TAHOE, STEP UP, VERACIOUS, TOP CUT, and Stellar females.

From: Connealy Angus, NE; Stellpflug Cattle Company, WY; Justin and Sara Spickler, ND

\$Values

\$M	79	25
\$W	90	10
\$F	153	1
\$G	83	15
\$B	237	2
\$C	386	1

EPDs as of 7/22/25														Production										Maternal										Carcass					
	CED	BW	WW	YW	RADG	DMI	YH	SC	DOC	Claw	Angle	PAP	HS	HP	CEM	UDDR	TEAT	Milk	MW	MH	\$EN	CW	Marb	RE	Fat	\$AxH	\$AxJ												
EPD	13	-1.2	78	140	.30	1.45	.80	1.25	20	.44	.52	-1.40	.37	13.8	7	.65	.76	36	88	.70	-.35	86	1.22	1.33	.090	252	258												
Acc	.36	.55	.47	.43	.30	.30	.47	.48	.45	.35	.35	.25	.32	.20	.29	.33	.34	.32	.38	.40	-	.38	.37	.36	.33														
Rank	10	10	25	20	20	65	25	30	50	35	75	10	30	15	65	25	15	4	30	30	90	3	15	3	95	2	2												

7AN813 BOYD **BEDROCK** \$50



AAA: 20640373

DOB: 2/20/23

TAT: 3057



SCAN
HERE

ELLINGSON PROFOUND 8155

SIRE: ELLINGSON PROLIFIC
EA QUEEN 8070

DAM: SITZ SHAUNA 220H
SITZ SHAUNA 72E



BEDROCK daughter, Boyd Cattle Co. KY

BEDROCK daughter, Boyd Cattle Co. KY

- > The first BEDROCK calves are on the ground and are validating the potential of this great young sire. His calves are born easy, exhibit early rapid growth and have the look that cattlemen desire.
- > BEDROCK adds growth without sacrificing structural soundness and maternal strength.
- > Offers a unique blend of proven genetics that provides mating flexibility to most herds.
- > His dam is an elegant young cow from the Sitz program that is beautifully designed and has a perfect udder.

From: Boyd Beef Cattle, KY; Stellpflug Cattle Company, WY and STgenetics, TX

\$Values

\$M	87	10
\$W	94	3
\$F	135	3
\$G	70	20
\$B	205	10
\$C	353	3

EPDs as of 7/22/25														Production										Maternal										Carcass					
	CED	BW	WW	YW	RADG	DMI	YH	SC	DOC	Claw	Angle	PAP	HS	HP	CEM	UDDR	TEAT	Milk	MW	MH	\$EN	CW	Marb	RE	Fat	\$AxH	\$AxJ												
EPD	7	0	98	175	.32	2.64	1.1	.63	25	.35	.32	-.83	.67	14.9	12	.54	.59	23	120	1.4	-.44	94	.97	.78	.021	151	154												
Acc	.44	.78	.47	.39	.31	.31	.45	.48	.44	.33	.36	.28	.33	.2	.27	.30	.31	.29	.35	.37	-	.37	.34	.33	.31	-	-												
Rank	45	25	1	1	10	95	5	70	25	10	2	15	80	4	15	45	40	70	5	1	95	1	20	35	55	25	20												

7AN735 BALDRIDGE GIBSON G859 \$30


AAA: 19581696

DOB: 2/12/19

TAT: G859

FROM: Baldridge Performance Angus,
NE and Riverbend Ranch, ID

SIRE: CONNEALY CONFIDENCE 0100
CONNEALY CONFIDENCE PLUS
ELBANNA OF CONANGA 1209
GAR PROPHET

DAM: BALDRIDGE ISABEL B061
BALDRIDGE ISABEL Y69

- > A highly proven sire that delivers quality cattle at every stage of production.
- > One of our best for customer satisfaction, breeders that use GIBSON always come back as he consistently sires cattle at the top of their contemporaries.
- > His daughters are making gorgeous young cows with excellent udders and are fertile with added fleshing ability.
- > Expect good-looking, fast-growing calves with added phenotype and more frame.


SCAN
HERE


EPDs as of 7/22/25

Production													Carcass																				
CED	BW	WW	YW	RADG	DMI	YH	SC	DOC	Claw	Angle	PAP	HS	HP	CEM	UDDR	TEAT	Milk	MW	MH	SEN	CW	Marb	RE	Fat	\$AxH	\$AxJ	\$M	\$W	\$F	\$G	\$B	\$C	
EPD	5	.70	84	147	.26	2.13	.50	.80	19	.35	.32	4.38	26	8.9	6	.77	.67	.36	32	.20	-.6	65	.91	1.07	.020	180	181	93	101	103	70	174	319
Acc	.78	.92	.9	.85	.47	.47	.87	.83	.79	.72	.71	.36	.71	.42	.58	.56	.58	.54	.55	.50	-	.55	.50	.51	.46	-	-	-	-	-	-	-	-
Rank	60	40	10	15	45	95	50	55	50	10	2	95	15	90	70	10	25	5	85	70	30	20	25	10	55	15	10	5	35	35	20	25	10

7AN758 GAR APEX \$30


AAA: 20255076

DOB: 8/20/21

TAT: 6271

FROM: Gardiner Angus Ranch, Nick Messer and
Messer Cattle LLC, KS; Howard Messer and
Lowell Messer, MO

SIRE: GAR DUAL THREAT
GAR SURE FIRE
GAR DAYBREAK A3010
GAR ASHLAND
DAM: GAR ASHLAND N779
GAR PROPHET N1135

- > APEX is one of the hidden gems in our lineup!
- > What are the two traits ranchers demand? CE and Docility. APEX ranks in the top 1-2% for both!
- > APEX offers the MARB, REA and \$B we come to expect from the Gardiner program but it's the extras of DOC, PAP, HS and \$M that set him apart.


SCAN
HERE


EPDs as of 7/22/25

Production													Carcass																				
CED	BW	WW	YW	RADG	DMI	YH	SC	DOC	Claw	Angle	PAP	HS	HP	CEM	UDDR	TEAT	Milk	MW	MH	\$EN	CW	Marb	RE	Fat	\$AxH	\$AxJ	\$M	\$W	\$F	\$G	\$B	\$C	
EPD	15	-2.5	70	126	.27	1.41	.30	1.37	36	.48	.55	-2.35	-.02	12.4	13	.49	.56	37	38	0	-10	64	1.41	1.56	.026	259	238	96	89	112	100	213	372
Acc	.68	.88	.84	.62	.37	.37	.74	.63	.53	.28	.28	.25	.30	.21	.31	.31	.32	.32	.43	.44	-	.65	.62	.62	.60	-	-	-	-	-	-	-	-
Rank	3	3	40	40	40	70	70	20	1	50	85	2	1	30	10	60	45	3	80	85	35	25	5	1	60	2	3	4	25	25	3	5	2

7AN797 YON DISCIPLINE \$30


AAA: 20403242

DOB: 12/12/21

TAT: K871

FROM: Yon Family Farms, SC; Connealy Angus, NE;
Knoll Crest Farms Inc, VA; Windy Pond Farms
and Joe Baker, GA

SIRE: TEHAMA PATRIARCH F028
TEHAMA ELITE BLACKBIRD D826
YON CHATTOOGA E46
DAM: YON WITCH H1246
YON WITCH D880

- > Calving Ease and MUCH more! A proven, elite sire with genetic strength across the entire EPD profile. DISCIPLINE provides one of the most versatile and well-rounded genetic packages available in the Angus breed today. As progeny data increases, he continues to bend the curve from birth to yearling.
- > Backed by a beautiful dam with a gorgeous udder and a stellar production record with a progeny weaning ratio of 112, yearling ratio of 104, IMF ratio of 123 and ribeye ratio of 106.


SCAN
HERE


EPDs as of 7/22/25

Production													Carcass																				
	CED	BW	WW	YW	RADG	DMI	YH	SC	DOC	Claw	Angle	PAP	HS	HP	CEM	UDDR	TEAT	Milk	MW	MH	SEN	CW	Marb	RE	Fat	\$AxH	\$AxJ	\$M	\$W	\$F	\$G	\$B	\$C
EPD	21	-3.5	82	148	.28	2.27	.60	.82	29	.44	.42	.80	.21	17.4	14	.53	.69	36	78	.50	-.30	78	.95	1.14	.03	212	216	109	99	121	72	194	361
Acc	.75	.85	.80	.47	.35	.35	.60	.50	.35	.36	.33	.29	.46	.24	.32	.34	.35	.34	.43	.43	-	.46	.39	.39	.36	-	-	-	-	-	-	-	-
Rank	1	1	15	10	30	95	40	55	10	30	25	45	10	1	10	50	20	5	35	50	80	5	25	10	65	10	4	1	2	15	20	10	3

7AN743 CONNEALY **CRAFTSMAN** \$30



AAA: 20132505

DOB: 11/13/20

TAT: 070R



SCAN
HERE

SITZ STELLAR 726D

SIRE: SITZ RESILIENT 10208

SITZ MISS BURGESS 1856

CONNEALY NIOBRARA 5451

DAM: BLACK CATHY OF CONANGA 8521

BLACK CARLA OF CONANGA 450



CRAFTSMAN daughter, Boyd Cattle Co. KY



CRAFTSMAN daughter,
Spruce Mountain, CO

- > 2024 breed leader for registrations, CRAFTSMAN is siring the added look and eye appeal that make his progeny easy to like and sell. His sons and daughters have been well received and are in high demand!
- > CRAFTSMAN offers balanced trait selection as both a high \$M and \$C sire with the added extras of HP, CLAW, ANGLE, MILK and MARB.

From: STgenetics, TX and Connealy Angus, NE

\$Values		
\$M	97	3
\$W	86	10
\$F	99	45
\$G	69	20
\$B	168	30
\$C	315	15

EPDs as of 7/22/25														Production										Maternal										Carcass					
	CED	BW	WW	YW	RADG	DMI	YH	SC	DOC	Claw	Angle	PAP	HS	HP	CEM	UDDR	TEAT	Milk	MW	MH	\$EN	CW	Marb	RE	Fat	\$AxH	\$AxJ												
EPD	3	1.6	74	132	.30	1.14	.60	.17	18	.32	.40	2.30	.31	14.7	6	.55	.57	36	24	0.5	-2	50	1.02	0.74	.052	165	159												
Acc	.86	.97	.96	.93	.60	.60	.92	.92	.88	.84	.83	.48	.75	.43	.51	.55	.57	0.41	.48	.47	-	.55	.51	.52	.46	-	-												
Rank	75	60	30	30	20	55	40	90	55	4	15	75	20	5	70	45	45	5	90	40	20	55	20	40	85	20	20												

7AN757 YON **SALUDA** \$30



AAA: 20336998

DOB: 9/9/21

TAT: K104



SCAN
HERE

MOHNEN SUBSTANTIAL 272

SIRE: SITZ STELLAR 726D

SITZ PRIDE 200B

VAR DISCOVERY 2240

DAM: YON SARAH D668

YON SARAH A615



SALUDA son, Boyd Cattle Co. KY



SALUDA daughter,
Myers Valley Angus, KY

- > Cattlemen from every region of the U.S. have used SALUDA for his rare combination of traits and rich pedigree blend.
- > SALUDA has obtained proven status and has lived up to his EPD predictions for making progress in multiple traits simultaneously.
- > He provides a unique pedigree with mating flexibility that excels for Marbling, Claw, Angle, PAP, HS, Teat and Udder.
- > It's hard to find a sire that does so much right while making stout-featured cattle that are eye-pleasing.
- > Expect calves to be born easy, be shiny black and vigorous, offer extra muscle shape and depth of body, and develop into good footed, sound structured, high performance and problem-free mature cattle.

From: Yon Family Farms, SC

\$Values		
\$M	83	15
\$W	75	25
\$F	119	15
\$G	81	10
\$B	201	10
\$C	344	4

EPDs as of 7/22/25														Production										Maternal										Carcass					
	CED	BW	WW	YW	RADG	DMI	YH	SC	DOC	Claw	Angle	PAP	HS	HP	CEM	UDDR	TEAT	Milk	MW	MH	\$EN	CW	Marb	RE	Fat	\$AxH	\$AxJ												
EPD	11	-.10	74	129	.27	1.14	.20	1.71	13	.38	.34	-.98	-.09	13.7	13	.66	.72	27	77	.04	-24	68	1.19	.83	.015	229	204												
Acc	.76	.91	.88	.79	.45	0.45	0.84	.78	0.72	.72	.71	.35	.74	.29	.37	.39	.40	.38	.49	.48	-	.52	.47	.48	.43	-	-												
Rank	20	25	30	35	40	55	80	10	75	15	3	10	1	15	10	20	20	40	40	50	70	15	10	30	50	4	10												

7AN691 EZAR

STEP UP 9178

\$30



AAA: 19430597

DOB: 1/29/19

TAT: 9178

FROM: EZ Angus Ranch, CA and
Edisto Pines, SC

SIRE: GAR SURE FIRE
GAR BIG STEP K715
CHAIR ROCK PROPHET 3131
EXAR DENVER 2002B
DAM: BASIN LUCY 4261
BASIN LUCY 1022



**SCAN
HERE**



- > A highly proven sire that epitomizes consistency! STEP UP excels for multi-trait selection and has now become a proven cow-maker as his early daughters excel for udder and foot quality.
- > He is one of only a few sires that rank in the top 5% or better for CLAW, ANGLE and MARB.
- > STEP UP is a proven sire that will take the guesswork out of your mating decision as he sires the right type and the added traits that make any operation profitable.



POWER UP, STEP UP son,
Spring Cove Ranch, ID



STEP UP daughter,
Edisto Pines, SC



STEP UP daughter,
Edisto Pines, SC

\$Values

\$M	76	25
\$W	62	55
\$F	106	30
\$G	90	5
\$B	196	10
\$C	330	10

EPDs as of 7/22/25														Production							Maternal							Carcass					
	CED	BW	WW	YW	RADG	DMI	YH	SC	DOC	Claw	Angle	PAP	HS	HP	CEM	UDDR	TEAT	Milk	MW	MH	\$EN	CW	Marb	RE	Fat	\$AxH	\$AxJ						
EPD	2	2.2	70	132	0.32	1.15	0.5	1.79	27	.30	.31	-0.25	.29	11.7	15	.55	.59	27	74	0.4	-23	54	1.39	0.97	.055	201	188						
Acc	.80	.95	0.93	0.87	0.45	0.45	0.88	.86	0.79	.73	.70	.40	.61	0.35	0.7	.52	.54	0.62	.53	.54	-	.53	.49	.50	.44	-	-						
Rank	80	70	40	30	10	55	50	10	15	2	2	20	15	40	3	45	40	40	40	50	65	45	5	15	90	10	10						

7AN810 BNWZ **VALIDITY** 2491 \$40



AAA: 20562449

DOB: 10/9/22

TAT: 2491

FROM: Nowatzke Angus and Maple Lane
Farms, IN and Edisto Pines, SC

MILL BRAE IDENTIFIED 4031

SIRE: HPCA VERACIOUS
HPCA SUNRISE A246
EXAR DENVER 2002B

DAM: RB LADY DENVER 167-453
RB LADY PARTY 167-305

- > This VERACIOUS son stems from the prolific Lady cow family, known for consistently producing eye-appealing cattle with extra performance and phenotype.
- > VALIDITY will capture your attention from every angle. He is dense bodied, heavy muscled, sound structured and has great foot quality.
- > He offers mating flexibility and is one of our best for \$C, \$B, and \$M combination in an added phenotype package.



SCAN
HERE



EPDs as of 7/22/25

Production														Maternal								Carcass											
EPDs as of 7/22/25														HP	CEM	UDDR	TEAT	Milk	MW	MH	SEN	CW	Marb	RE	Fat	\$AxH	\$AxJ	\$M	\$W	\$F	\$G	\$B	\$C
CED	BW	WW	YW	RADG	DMI	YH	SC	DOC	Claw	Angle	PAP	HS	HP	CEM	UDDR	TEAT	Milk	MW	MH	SEN	CW	Marb	RE	Fat	\$AxH	\$AxJ	\$M	\$W	\$F	\$G	\$B	\$C	
EPD	6	2.6	82	140	.28	1.36	.70	.13	10	.40	.30	2.40	.40	11.3	12	.65	.64	28	68	.50	-20	94	1.46	1.60	-.017	289	286	82	83	153	107	260	419
Acc	.46	.70	.61	.41	.33	.33	.50	.43	.38	.32	.30	.26	.34	.21	.35	.34	.36	.34	.38	.41	-	.46	.42	.41	.40	-	-	-	-	-	-	-	-
Rank	55	80	15	20	30	70	30	90	85	20	1	80	30	50	15	25	30	35	50	40	60	1	4	1	20	1	1	15	15	1	2	1	1

7AN843 CIRCLE G **MEMPHIS** M014B \$30



AAA: 20931703

DOB: 2/22/24

TAT: M014B

FROM: Circle G Ranch, GA

SIRE: GB FIREBALL 672
GAR FIREPROOF
CHAIR ROCK SURE FIRE 6095
GAR TRANSCENDENT

DAM: CIRCLE G RUBY 2099
SPRUCE MTN RUBY 9585

- > The city of Memphis is famous for music and BBQ, we think this MEMPHIS will be famous for adding dollars to your pocket!
- > He offers incredible projections for CW, Marb and Ribeye and provides opportunities for significant carcass premiums.
- > His pedigree is a rich blend of some of the most influential carcass improvers of the past decade.



SCAN
HERE



EPDs as of 7/22/25

EPDs as of 7/22/25														Production										Maternal										Carcass											
	CED	BW	WW	YW	RADG	DMI	YH	SC	DOC	Claw	Angle	PAP	HS	HP	CEM	UDDR	TEAT	Milk	MW	MH	SEN	CW	Marb	RE	Fat	\$AxH	\$AxJ	\$M	\$W	\$F	\$G	\$B	\$C												
EPD	3	2.9	92	177	.41	1.93	1.2	1.61	24	.55	.42	-.04	-.21	12.3	9	.30	.22	36	112	1.4	-.47	101	2.06	1.06	.020	276	273	57	91	165	126	292	436												
Acc	.33	.48	.4	.35	.28	.28	.42	.38	.33	.26	.26	.24	.31	.16	.26	.26	.28	.27	.33	.36	-	.35	.34	.33	.31	-	-	-	-	-	-	-	-												
Rank	75	85	4	1	1	90	3	15	30	75	25	25	1	35	40	95	95	4	10	2	95	1	1	15	50	1	1	70	1	1	1	1	1												

7AN877 HPCA **ROBUST** \$30



AAA: 20905517

DOB: 2/13/24

TAT: 524

FROM: Hinkle's Prime Cut Angus and
ROBUST Group, MO

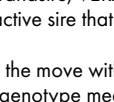
SIRE: GB FIREBALL 672
GAR GRID MAKER L1071
CHAIR ROCK SURE FIRE 6095
HPCA VERACIOUS

DAM: HPCA VERACIOUS 122
HPCA HIGH VALUE S102

- > New for Fall, ROBUST is a logical replacement for his maternal grandsire, VERACIOUS.
- > Breed-leading growth, Docility and Marb make ROBUST an attractive sire that adds real value to any calf crop.
- > ROBUST is complete with added look and is extremely mobile on the move with added depth of body and a long level hip. This is where phenotype and genotype meet!
- > Check about FALL 2025 availability



SCAN
HERE



EPDs as of 7/22/25

EPDs as of 7/22/25														Production										Maternal										Carcass									
	CED	BW	WW	YW	RADG	DMI	YH	SC	DOC	Claw	Angle	PAP	HS	HP	CEM	UDDR	TEAT	Milk	MW	MH	SEN	CW	Marb	RE	Fat	\$AxH	\$AxJ	\$M	\$W	\$F	\$G	\$B	\$C										
EPD	11	1.8	88	157	.34	1.81	.30	1.39	33	.47	.51	0.58	-.15	12.1	10	.44	.52	25	95	0.7	-.32	80	2.01	1.18	.048	305	260	75	85	129	123	253	403										
Acc	.31	.46	.38	.32	.26	.26	.49	.46	.33	.29	.30	.22	.32	.15	.24	.25	.27	.26	.32	.35	-	.38	.37	.36	.34	-	-	-	-	-	-	-	-										
Rank	15	65	10	10	4	85	80	20	2	45	75	40	1	40	30	75	60	60	25	30	85	10	1	10	80	1	1	30	5	5	1	1	1										

7AN769 COLEMAN **EASY DECISION** 1539

\$30

AAA: 20503415

DOB: 6/30/21

TAT: 1539



SCAN
HERE



OCC JUNEAU 807J
SIRE: COLEMAN ROCK 7200
COLEMAN DONNA 714
COLEMAN CHARLO 0256
DAM: COLEMAN DONNA 7386
COLEMAN DONNA 5309



EASY DECISION son,
Coleman Angus, MT



EASY DECISION daughter,
Coleman Angus, MT

- > This sire's pedigree is the epitome of form and function along with a lengthy list of convenience traits.
- > His performance ratios lean the correct direction with figures of 100 for BW and 101 for both WW and YW.
- > The term 'cow power' is easy to visualize when you study his lineage; he's loaded with special cows and bulls known for creating standout females.
- > The Coleman program focuses on the female, this bull is no exception, he's an EASY DECISION.

From: Coleman Angus, MT and Southern Cattle Company, FL

\$Values

\$M	101	2
\$W	73	30
\$F	81	75
\$G	23	95
\$B	105	90
\$C	237	65

EPDs as of 7/22/25														Production								Maternal								Carcass					
	CED	BW	WW	YW	RADG	DMI	YH	SC	DOC	Claw	Angle	PAP	HS	HP	CEM	UDDR	TEAT	Milk	MW	MH	\$EN	CW	Marb	RE	Fat	\$AxH	\$AxJ								
EPD	9	-.70	74	127	.23	1.59	.2	1.82	28	.31	.40	-.39	.30	13.3	8	.78	.81	22	57	.10	-.11	49	.08	.71	.043	40	39								
Acc	.65	.83	.75	.67	.35	.35	.53	.72	.72	.56	.60	.26	.30	.18	.28	.32	.33	.30	.43	.41	-	.44	.31	.31	.28	-	-								
Rank	30	15	30	35	70	80	80	10	15	3	15	20	20	15	50	5	10	75	60	75	40	55	95	40	80	70	70								

7AN779 CONNEALY **RESTORE** 178C

\$25

AAA: 20383223

DOB: 8/13/21

TAT: 178C



SCAN
HERE



SS NIAGARA Z29
SIRE: TEHAMA PATRIARCH F028
TEHAMA ELITE BLACKBIRD D826
CONNEALY STRONGHOLD
DAM: JENNA OF CONANGA 936J
JELLY OF CONANGA 733F



RESTORE's dam

- > An exciting proven Calving Ease sire purchased in the 2023 Connealy Angus sale.
- > RESTORE is a proven Calving Ease sire whose progeny are big hipped, high volume and structurally correct. He will hold mature size in check while adding muscle shape.
- > He offers excellent phenotype with a 5.9 frame, added muscle shape, depth of rib and length of body.
- > A pedigree that is stacked with generations of Maternal value, as displayed by his over 100 \$M.
- > His young dam has four calves on record with 104 Weaning, 101 Yearling and 103 for both Marbling and REA ratios.

From: Connealy Angus, NE

\$Values

\$M	104	2
\$W	92	4
\$F	94	55
\$G	65	25
\$B	159	40
\$C	310	15

EPDs as of 7/22/25														Production										Maternal										Carcass									
	CED	BW	WW	YW	RADG	DMI	YH	SC	DOC	Claw	Angle	PAP	HS	HP	CEM	UDDR	TEAT	Milk	MW	MH	\$EN	CW	Marb	RE	Fat	\$AxH	\$AxJ																
EPD	11	-1.3	72	128	.25	1.58	0	1.39	25	.39	.41	1.16	.35	14	11	.50	.68	37	33	0	-7	56	.84	.95	.026	176	172																
Acc	.47	.69	.61	.54	.35	.35	.49	.57	.53	.35	.31	.30	.32	.25	.33	.35	.36	.34	.43	.43	-	.44	.40	.40	.38	-	-																
Rank	20	10	35	35	55	80	90	20	25	15	20	55	25	10	25	60	25	3	85	85	30	40	30	20	60	15	20																

7AN851 SITZ **CONTRACTOR** 9453

\$30



AAA: 20692507

DOB: 2/21/23

TAT: 9453

FROM: Sitz Angus Ranch, MT

SYDGEN BLUEPRINT

SIRE: S ARCHITECT 9501

S BLOSSOM 7514

SITZ VIGILANTE 11830

DAM: SITZ ELSIEMERE 4002

SITZ ELSIEMERE 5187



SCAN
HERE



- > An exciting Calving Ease/maternal prospect that was the lot one and feature sire from the 2024 Sitz Angus Fall sale.
- > CONTRACTOR is backed by a highly productive 12-year-old dam with an impressive production record.
- > He is a 6.1 frame with body length, capacity and foot quality. He exemplifies growth and performance by offering ratios of 113 at weaning and 116 at yearling.

EPDs as of 7/22/25

EPDs as of 7/22/25													Production										Maternal										Carcass									
	CED	BW	WW	YW	RADG	DMI	YH	SC	DOCClaw	Angle	PAP	HS	HP	CEM	UDDR	TEAT	Milk	MW	MH	\$EN	CW	Marb	RE	Fat	\$AxH	\$AxJ	\$M	\$W	\$F	\$G	\$B	\$C										
EPD	11	-1.3	78	142	.27	2.02	.90	1.46	28	.41	.44	-3.57	30	17.6	15	.52	.36	22	103	.90	-34	72	.49	.70	.026	98	95	80	71	117	45	162	290									
Acc	.35	.55	.48	.44	.30	.30	.45	.48	.35	.35	.35	.38	.29	.23	.31	.33	.35	.35	.35	.38	-	.38	.34	.33	.30	-	-	-	-	-	-	-	-									
Rank	15	10	25	20	40	95	15	20	15	25	35	1	20	1	3	60	90	80	20	15	85	15	75	50	60	65	55	20	35	15	70	40	30									

7AN815 NELSON **RIDGELINE** 2123

\$25



AAA: 20657889

DOB: 2/4/23

TAT: 3123

FROM: Nelson Angus Ranch, ID

TEHAMA PATRIARCH F028

SIRE: CHERRY CRK BLUE COLLAR G275

CHERRY CRK ENVITA B211 S

BASIN PAYWEIGHT 1682

DAM: NELSON LADY 6533

NELSON LADY 2663



SCAN
HERE



- > A rising star in our lineup, RIDGELINE offers an outcross in a Calving Ease package.
- > High altitude programs will appreciate his PAP score of 38 and his negative PAP EPD.
- > His 9-yr-old dam has posted impressive and consistent production records and has calved for the 8th time and is exceptional for foot quality.
- > RIDGELINE offers balanced EPDs across the board ranking in the Top 25% or better for most traits and caps it off by being a breed leader for \$M and \$C.

EPDs as of 7/22/25

EPDs as of 7/22/25													Production											Maternal										Carcass											
	CED	BW	WW	YW	RADG	DMI	YH	SC	DOC	Claw	Angle	PAP	HS	HP	CEM	UDDR	TEAT	Milk	MW	MH	\$EN	CW	Marb	RE	Fat	\$AxH	\$AxJ	\$M	\$W	\$F	\$G	\$B	\$C												
EPD	14	-0.6	75	140	.29	1.88	.40	1.06	30	.46	.39	-1.01	.79	13.4	14	.23	.28	26	49	.10	-9	66	0.98	0.90	.025	189	164	90	79	110	71	182	326												
Acc	.36	.56	.48	.43	.31	.31	.52	.49	.45	.35	.35	.39	.28	.22	.31	.29	.31	.33	.37	.40	-	.39	.36	.35	.33	-	-	-	-	-	-	-	-												
Rank	4	15	35	20	25	90	70	40	10	40	15	15	90	20	5	95	95	50	80	85	30	25	30	30	60	15	20	10	25	25	25	20	15												

7AN850 44 **NEW HEIGHTS**

\$30



AAA: 20749570

DOB: 8/16/23

TAT: 3249

FROM: 44 Farms LLC, TX; Ellison Ranch, NV and

Daltons on the Sycamore LLC, VA

GAR SUNBEAM

SIRE: CONNEALY COMMERCE

AVIRA OF CONANGA 814R

44 BRAGGING RIGHTS 4372

DAM: DALTONS LADY 9208

DALTONS LADY 7344



SCAN
HERE



- > NEW HEIGHTS is a safe, go-to heifer option that will create extra feeder calf value as well as elite replacements.
- > His balanced data without extremes allows for mating flexibility as he ranks in the top 25% or better for 10 different traits.
- > NEW HEIGHTS can maximize profit when marketing at weaning, yearling or feeding entirely out, without maximizing mature cow size.
- > Utilize his breed-leading PAP EPD to reach NEW HEIGHTS in all environments.

EPDs as of 7/22/25

EPDs as of 7/22/25													Production										Maternal										Carcass									
	CED	BW	WW	YW	RADG	DMI	YH	SC	DOCClaw	Angle	PAP	HS	HP	CEM	UDDR	TEAT	Milk	MW	MH	\$EN	CW	Marb	RE	Fat	\$AxH	\$AxJ	\$M	\$W	\$F	\$G	\$B	\$C										
EPD	14	0.1	76	140	.27	2.21	.50	1.49	19	.41	.43	-2.40	.43	11.7	12	.54	.58	26	27	0	2	61	1.08	1.16	-.016	204	195	104	82	97	82	180	337									
Acc	.34	.52	.45	.41	.30	.30	.49	.46	.33	.27	.27	.24	.29	.17	.26	.26	.27	.27	.34	.36	-	.36	.35	.34	.32	-	-	-	-	-	-	-	-									
Rank	4	25	30	20	40	95	55	15	55	25	30	2	40	45	15	55	45	50	95	90	15	40	25	10	15	10	15	2	15	45	15	25	10									

7AN760 SITZ **ESSENTIAL** 731J

\$25



AAA: 20003666

DOB: 1/18/21

TAT: 731J

FROM: Spring Cove Ranch, and Triple L LLC, ID and Sitz Angus Ranch, MT

SIRE: SITZ STELLAR 726D
SITZ PRIDE 200B
POSS ACHIEVEMENT
DAM: SITZ ELSIEMERE 60G
SITZ ELSIEMERE 310E



SCAN
HERE



- > A proven and bulletproof Calving Ease sire that offers so much more!
- > Early daughters in production are near perfect in their teat size and placement as well as udder quality.
- > ESSENTIAL is perfect for high elevation as a breed leader for PAP and also offers extra growth and marbling.

EPDs as of 7/22/25														Production										Maternal										Carcass											
	CED	BW	WW	YW	RADG	DMI	YH	SC	DOCC	Claw	Angle	PAP	HS	HP	CEM	UDDR	TEAT	Milk	MW	MH	\$EN	CW	Marb	RE	Fat	\$AxH	\$AxJ	\$M	\$W	\$F	\$G	\$B	\$C												
EPD	14	-3	71	132	.30	1.56	.50	1.29	22	.58	.66	-3.08	33	13.6	11	.76	.80	22	75	.50	-20	56	1.13	.18	.073	78	54	65	67	105	66	172	288												
Acc	.63	.85	.79	.73	.40	.40	.51	.71	.35	.40	.41	.32	.31	.25	.44	.37	.38	.33	.44	.44	-	.49	.44	.45	.40	-	-	-	-	-	-	-	-	-											
Rank	5	2	40	30	20	80	50	25	35	85	95	1	20	15	25	10	10	75	40	40	60	40	15	95	95	65	65	45	35	35	25	25	25	25											

7AN772 DEPPE WW SFF **DURACELL** 279 \$25



AAA: 20512137

DOB: 2/13/22

TAT: 279

FROM: Deppe Angus, IA

SIRE: SITZ STELLAR 726D
SITZ MISS BURGESS 1856
CONNEALY BLACK GRANITE
DAM: WERNER LADY JAYE 6222
WERNER LADY JAYE 0176



SCAN
HERE



- > There's plenty to like here – and this bull just keeps getting better!
- > He's currently displaying a 97 ratio for birth and 102 for weaning.
- > DURACELL puts pressure on mature height and weight and excels for the traits of HP, CEM and PAP. He's one of the highest \$Maternal bulls in our entire lineup.
- > His pedigree is different enough to allow for widespread use and the demand for his sons and daughters has been exciting.

EPDs as of 7/22/25														Production										Maternal										Carcass									
	CED	BW	WW	YW	RADG	DMI	YH	SC	DOCClaw	Angle	PAP	HS	HP	CEM	UDDR	TEAT	Milk	MW	MH	SEN	CW	Marb	RE	Fat	\$AxH	\$AXJ	\$M	\$W	\$F	\$G	\$B	\$C											
EPD	15	-2.2	75	123	.22	1.31	.40	.86	18	.53	.54	-1.30	45	15.2	15	.67	.80	33	14	.10	5	45	1.25	.58	.49	167	138	120	100	75	79	155	321										
Acc	.49	.74	.64	.43	.36	0.36	0.49	.40	0.38	.30	.30	.33	.33	.25	.33	.34	.35	.35	.41	.43	-	.45	.41	.41	.38	-	-	-	-	-	-	-	-										
Rank	3	3	30	45	75	65	60	55	55	70	80	10	40	3	3	20	10	15	95	75	15	65	10	60	85	20	25	1	1	85	15	45	10										

7AN796 DEER VALLEY **BASLINE** 21007 \$25



AAA: 20367129

DOB: 1/1/22

TAT: 21007

FROM: Deer Valley Farm, TN and Elite Cattle Company, SC

SIRE: DEER VALLEY GROWTH FUND
DEER VALLEY OPTIMUM 9246
GAR PROGRESS 830
GAR SURE FIRE
DAM: CHAIR ROCK SURE FIRE 6095
CHAIR ROCK PROGRESS 3005



SCAN
HERE



- > A phenotypic standout with Calving Ease, elite growth and carcass merit.
- > His royal pedigree is potent for Marbling (top 2%) and combines the dam of HOMETOWN with the GAR Progress 830 cow.
- > The perfect sire to use on replacement heifers with growth and end product merit in mind.

EPDs as of 7/22/25														Production										Maternal										Carcass									
	CED	BW	WW	YW	RADG	DMI	YH	SC	DOCC	claw	Angle	PAP	HS	HP	CEM	UDDR	TEAT	Milk	MW	MH	\$EN	CW	Marb	RE	Fat	\$AxH	\$AxJ	\$M	\$W	\$F	\$G	\$B	\$C										
EPD	11	1	82	143	.26	1.64	.30	.24	21	.58	.56	-1.97	.31	12.5	13	.73	.78	25	72	.30	-20	81	1.62	.90	.069	276	241	83	84	136	99	236	389										
Acc	.38	.55	.42	.38	.29	.29	.43	.48	.44	.35	.35	.25	.30	.22	.32	.31	.33	.31	.35	.36	-	.38	.37	.36	.34	-	-	-	-	-	-	-	-	-									
Rank	20	45	15	15	45	85	70	90	40	85	90	3	20	30	10	10	10	55	45	60	60	4	2	20	95	1	2	15	10	3	3	2	1										

7AN684 CONNEALY **GUARD RAIL** 923E \$25



AAA: 19829215

DOB: 11/6/19

TAT: 923E

FROM: Connealy Angus, NE and Benoit Angus, KS
TEHAMA UPWARD Y238

SIRE: TEHAMA TAHOE B767
TEHAMA MARY BLACKBIRD Y684
CONNEALY LEGENDARY 644L

DAM: QUEEN BABES OF CONANGA 870J
QUEEN BARB OF CONANGA 60C



SCAN
HERE



- > GUARD RAIL has proven to guide your cow herd to the road of profitability. He is an elite Calving Ease/maternal combination.
- > His first daughters are in production and are making beautiful females with volume and excellent udder quality.
- > An excellent choice for commercial heifer projects where moderate framed, slick haired, maternal, efficient replacement females are the goal.

EPDs as of 7/22/25

EPDs as of 7/22/25														Production														Maternal														Carcass													
	CED	BW	WW	YW	RADG	DMI	YH	SC	DOCC	Claw	Angle	PAP	HS	HP	CEM	UDDR	TEAT	Milk	MW	MH	SEN	CW	Marb	RE	Fat	\$AxH	\$AxJ	\$M	\$W	\$F	\$G	\$B	\$C																						
EPD	14	-2.9	60	104	.22	.98	0	1.14	15	.49	.46	2.45	-.01	21	11	.49	.61	30	30	-.5	-2	36	0.85	0.37	.022	132	99	103	72	74	59	133	276																						
Acc	.75	.89	.85	.78	.43	.43	.76	.77	.65	.56	.54	.31	.56	.39	.51	.52	.55	0.42	.51	.54	-	.61	.56	.57	.53	-	-	-	-	-	-	-	-																						
Rank	5	2	70	70	75	45	90	35	70	50	40	80	1	1	25	60	35	25	85	95	20	80	30	80	55	35	45	2	30	85	35	70	35																						

7AN683 HF **SAFE & SOUND** 019 \$25



AAA: 19705988

DOB: 3/4/20

TAT: 019

FROM: Hilton Farms, OK and Connealy Angus, NE

SIRE: MILL BRAE IDENTIFIED 4031
MILL BRAE PRO BLACKCAP 1092
TEX PLAYBOOK 5437
DAM: HF EMPRESS 804
HF EMPRESS 6007



SCAN
HERE



- > SAFE & SOUND is the standard for customer satisfaction for use on heifers.
- > He offers added muscle, dimension and correctness in a heifer safe option.
- > He also offers the added extras of HP and MARB. Ranking near the top of the breed for \$M making him an ideal choice or producing daughters you'll want to keep.

EPDs as of 7/22/25

EPDs as of 7/22/25														Production														Maternal														Carcass													
	CED	BW	WW	YW	RADG	DMI	YH	SC	DOCC	Claw	Angle	PAP	HS	HP	CEM	UDDR	TEAT	Milk	MW	MH	SEN	CW	Marb	RE	Fat	\$AxH	\$AxJ	\$M	\$W	\$F	\$G	\$B	\$C																						
EPD	15	-0.9	69	128	.28	1.41	0	.79	7	.40	.52	2.72	.60	13.2	12	.58	.80	30	27	-.2	0	68	.84	.79	.097	201	176	93	79	125	58	184	332																						
Acc	.80	.91	.89	.84	.42	.42	.84	.81	.82	.71	.70	.27	.71	.45	.58	.64	.66	.47	.58	.64	-	.62	.57	.58	.54	-	-	-	-	-	-	-	-																						
Rank	3	15	45	35	30	70	90	55	90	20	75	85	65	20	15	35	10	25	90	90	20	15	30	35	95	10	15	5	20	10	35	15	10																						

7AN617 RR **ENDEAVOR** 9005 \$25



AAA: 19551197

DOB: 1/14/19

TAT: 9005

FROM: Raymond and Son Inc., OR

SIRE: LD CAPITALIST 316
LD DIXIE ERICA 2053
RAVEN POWERBALL 53
DAM: ROLLIN ROCK BLACKBIRD 7059
ROLLIN ROCK BLACKBIRD 9080



SCAN
HERE



- > ENDEAVOR's demand is universal and his value continues to climb because he fits so many scenarios.
- > ENDEAVOR adds super fertility and noticeable calf vigor.
- > He's 97 for BW and 102 for both WW and YW. That makes him exceptional!
- > Use him to boost your percent AI calf crop and reap the rewards.

EPDs as of 7/22/25

EPDs as of 7/22/25														Production										Maternal										Carcass													
	CED	BW	WW	YW	RADG	DMI	YH	SC	DOCC	Claw	Angle	PAP	HS	HP	CEM	UDDR	TEAT	Milk	MW	MH	SEN	CW	Marb	RE	Fat	\$AxH	\$AxJ	\$M	\$W	\$F	\$G	\$B	\$C														
EPD	18	-3.0	77	142	.27	1.99	.30	1.45	16	.49	.54	2.29	.62	10.6	13	.73	.81	26	85	.60	-.28	66	.83	.37	.084	125	87	68	78	115	53	168	286														
Acc	.75	.89	.85	.79	.40	.40	0.61	.67	.49	.49	.55	.29	.30	.26	.42	.31	.32	.39	.44	.44	-	.50	.44	.45	.40	-	-	-	-	-	-	-	-														
Rank	1	2	25	15	40	95	70	20	65	50	80	75	70	60	10	10	10	50	30	35	75	20	30	80	95	40	50	35	20	20	45	30	30														

7AN753 SAV **GRAND CANYON** 0969 **\$30**



AAA: 19860277

DOB: 1/2/20

TAT: 0969



SCAN
HERE

COLEMAN CHARLO 0256

SIRE: SAV RAINFALL 6846

SAV BLACKCAP MAY 4136

SAV NET WORTH 4200

DAM: SAV MADAME PRIDE 9477

SAV MADAME PRIDE 0075



GRAND CANYON son,
Carlson Angus, ND



GRAND CANYON son,
Schaff Valley Angus, ND

	\$Values	
\$M	57	60
\$W	60	55
\$F	81	75
\$G	44	60
\$B	126	75
\$C	220	75

- > We wanted a bull to follow the trail that his sire, 7AN466 RAINFALL, had blazed. GRAND CANYON is proving to be the right choice.
- > Expect moderate-sized, easy-keeping females with fantastic udders. There's plenty of experience behind this sire.
- > GRAND CANYON is a physical specimen, sound-footed and big-middled with a powerful Angus look. If cow families are important in your program, here's one to include.

From: Schaff Angus Valley, Rust Mountain View Ranch and Carlson Angus, ND

EPDs as of 7/22/25														Production										Maternal								Carcass					
	CED	BW	WW	YW	RADG	DMI	YH	SC	DOC	Claw	Angle	PAP	HS	HP	CEM	UDDR	TEAT	Milk	MW	MH	SEN	CW	Marb	RE	Fat	\$AxH	\$AxL										
EPD	9	.60	57	103	.22	.90	.10	1.1	18	.28	.46	-.80	.42	8.3	8	.45	.70	30	39	-.30	-.6	37	.71	.18	.094	58	8										
Acc	.61	.85	.82	.74	.40	.40	.53	.66	.59	.45	.44	.27	.30	.24	.41	.36	.37	.39	.44	.44	-	.49	.43	.44	.40	-	-										
Rank	30	35	75	75	75	40	85	35	55	2	40	15	35	95	50	70	20	25	80	95	30	80	40	95	95	70	80										

7AN528 DEER VALLEY **GROWTH FUND** \$30

AAA: 18827828

DOB: 1/22/17

TAT: 71122



SCAN
HERE

BASIN PAYWEIGHT 006S

SIRE: BASIN PAYWEIGHT 1682

21AR O LASS 7017

PLATTEMERE WEIGH UP K360

DAM: DEER VALLEY RITA 36113

DEER VALLEY RITA 9457



GROWTH FUND daughter,
Spruce Mountain, CO



GROWTH FUND daughter,
Long Angus, OK

- > GROWTH FUND was the Angus breed leader for registrations in 2023 and undoubtedly one of the top sires in history for his positive impact in both the purebred and commercial sectors.
- > High customer satisfaction is an understatement as GROWTH FUND has sired the top of calf crops across every region of the U.S. He consistently makes improvement across most bloodlines and equally sires powerful cattle of both sexes.
- > GROWTH FUND provides all the fundamentals to sire consistently good cattle in any application.

From: Deer Valley Farm, TN; Edisto Pines, SC; Britt Angus, GA; Trowbridge Angus, NY; Austin Family Angus, CA;
and Lawson Farms and Tom Baker. VA

Production														Maternal								Carcass					
	CED	BW	WW	YW	RADG	DMI	YH	SC	DOC	Claw	Angle	PAP	HS	HP	CEM	UDDR	TEAT	Milk	MW	MH	\$EN	CW	Marb	RE	Fat	\$AxH	\$AxJ
EPD	9	1.5	91	168	.37	1.88	.60	.75	22	.48	.47	3.92	.97	12.6	12	.43	.45	26	109	.60	-.40	85	.52	.71	.069	148	133
Acc	.91	.98	.97	.96	.70	.70	.96	.95	.93	.90	.89	.59	.85	.78	.92	.89	.90	0.91	.84	.83	-.81	.77	.78	.75	-	-	-
Rank	30	55	4	2	1	95	40	60	35	50	45	95	95	25	15	75	70	50	10	35	95	2	60	40	95	25	30

	\$Values	
\$M	61	50
\$W	101	1
\$F	131	5
\$G	43	65
\$B	174	25
\$C	287	25

7AN835 PVF **CAPONE** 2105

\$40



AAA: 20567999

DOB: 8/22/22

TAT: 2104



SCAN
HERE



PVF BLACKLIST 7077

SIRE: PVF DLX KING PIN 0058
PVF LUCY 4189

DAM: PVF MISSIE 5245
C&C MCKINLEY 3000 EXAR
PVF MISSIE 0084

- > The newest Calving Ease Showcase™ sire that has everyone talking! His early calves are the talk of the industry and will be sale highlights this fall and into the spring.
- > CAPONE is built right from the ground up with extra bone, hip and width, and he also offers that extra look and presence needed to get noticed.
- > He is the perfect option for use on this year's show heifer, to create your next champion.
- > gender SELECTED™ female semen available.

From: Prairie View Farm, IL

\$Values		
\$M	57	60
\$W	56	65
\$F	81	75
\$G	62	30
\$B	143	55
\$C	242	60

EPDs as of 7/22/25														Production										Maternal										Carcass					
	CED	BW	WW	YW	RADG	DMI	YH	SC	DOC	Claw	Angle	PAP	HS	HP	CEM	UDDR	TEAT	Milk	MW	MH	\$EN	CW	Marb	RE	Fat	\$AxH	\$AxJ												
EPD	14	-0.2	58	105	.24	.95	.5	1.65	17	.43	.54	.69	1.43	12	11	.73	.49	27	66	.40	-18	38	.66	.94	-.053	121	96												
Acc	.29	.46	.39	.33	.23	.23	.38	.33	.29	.21	.21	.18	.23	.14	.23	.24	.25	.24	.30	.32	-	.30	.29	.27	.25	-	-												
Rank	5	20	75	70	60	40	50	10	60	30	80	40	95	35	25	10	60	40	50	50	55	75	45	20	2	40	45												

7AN618 PVF **MARVEL** 9185

\$30



AAA: 19566408

DOB: 4/27/19

TAT: 9185



SCAN
HERE



PVF INSIGHT 0129

SIRE: PVF BLACKLIST 7077
PVF BLACKBIRD 3070

DAM: PVF MISSIE 5245
C&C MCKINLEY 3000 EXAR
PVF MISSIE 0084

- > MARVEL has proven himself to be the sire to bring home the hardware!
- > He consistently sires cattle that are sleek fronted but offer extra hip and punch as they walk away.
- > MARVEL makes the right kind for collecting banners, but their real value might be when their show career is done and they enter into production and the donor pen.
- > gender SELECTED™ female semen available.

From: Prairie View Farms, Ashton Dillow, Brandon and Kathy Jones, IL; Boyd Beef Cattle and Hammerhead Cattle Co., KY



Marvel daughter,
Prairie View Farms, IL



Marvel daughter, 2024 fourth
overall female, Ashton Dillow, IL

\$Values		
\$M	12	95
\$W	47	80
\$F	111	25
\$G	63	30
\$B	175	25
\$C	239	65

EPDs as of 7/22/25														Production										Maternal										Carcass					
	CED	BW	WW	YW	RADG	DMI	YH	SC	DOC	Claw	Angle	PAP	HS	HP	CEM	UDDR	TEAT	Milk	MW	MH	\$EN	CW	Marb	RE	Fat	\$AxH	\$AxJ												
EPD	3	2.8	65	114	.28	.58	.40	-.12	0	.57	.51	-.80	1.25	7.8	-4	.76	.63	21	92	0.6	-28	50	0.69	1.05	-.034	150	121												
Acc	.48	.88	.79	.63	.34	.34	.63	.53	.54	.41	.41	.21	.30	.27	.46	.44	.46	.39	.43	.40	-	.43	.37	.38	.34	-	-												
Rank	75	85	55	55	30	20	60	95	95	85	70	15	95	95	95	10	30	80	25	35	75	55	45	10	10	25	35												

7AN738 E&B RIVAL 175

\$25



AAA: 20128929

DOB: 1/28/21

TAT: 175



SCAN
HERE

BASIN PAYWEIGHT 1682

SIRE: DEER VALLEY GROWTH FUND
DEER VALLEY RITA 36113

CONNEALY CONFIDENCE PLUS

DAM: E&B LADY PLUS 8180
E&B LADY PRIMESTAR 086



RIVAL son, 44 Farms, TX



RIVAL daughter, Benoit Angus, KS

- > One of GROWTH FUND's best sons that combines excellent phenotype with added performance and carcass merit.
- > RIVAL scanned an 8.39 IMF with a 232 ratio and a 16.9 REA for a 102 ratio, and his progeny are backing that up with 15 actual carcass records and over 150 ultrasounds ratioing 107 for IMF and 102 for REA.
- > While being a 6 frame, RIVAL offers extra stature, added muscle and depth of rib, with great structural correctness.
- > An excellent mating option for 14AN502 TAHOE daughters.

From: Benoit Angus, KS

\$Values		
\$M	81	15
\$W	82	15
\$F	112	25
\$G	79	15
\$B	192	15
\$C	330	10

EPDs as of 7/22/25														Production										Maternal								Carcass							
	CED	BW	WW	YW	RADG	DMI	YH	SC	DOC	Claw	Angle	PAP	HS	HP	CEM	UDDR	TEAT	Milk	MW	MH	\$EN	CW	Marb	RE	Fat	\$AxH	\$AxJ												
EPD	7	2.7	85	151	.28	1.94	0.7	.40	14	.37	.37	.72	.43	14.5	4	.57	.54	30	90	0.5	-.32	71	1.12	1.03	.035	197	201												
Acc	.49	.87	.83	.74	.42	.42	.80	.75	.70	.54	.50	.31	.45	.31	.36	.35	.36	.36	.47	.47	-	.62	.58	.59	.55	-	-												
Rank	45	80	10	10	30	95	30	80	75	10	10	40	35	10	85	40	50	25	25	40	85	15	15	15	70	10	10												

7AN695 EWA NETWORK025

\$25



AAA: 19866645

DOB: 8/12/20

TAT: 025



SCAN
HERE

EWA PEYTON 642

SIRE: EWA TEAMWORK 821
EWA 543 OF 117 WEIGH UP

SS NIAGARA Z29

DAM: EWA 8124 OF 6131 NIAGARA
EWA 6131 OF 2052 FORTRESS

- > NETWORK is a true curvebender ranking in the top 5% for CE and top 10% for YW.
- > He is long and athletic, with extra hip and top shape and added foot size.
- > The bottom side of his pedigree is stacked with Select Sires' greats (7AN388 NIAGARA x 7AN393 FORTRESS x 7AN361 SUNRISE).

From: Edgewood Angus LLC, VA and the NETWORK Group

\$Values		
\$M	47	80
\$W	90	5
\$F	119	15
\$G	63	30
\$B	183	20
\$C	284	30

EPDs as of 7/22/25														Production										Maternal										Carcass									
	CED	BW	WW	YW	RADG	DMI	YH	SC	DOC	Claw	Angle	PAP	HS	HP	CEM	UDDR	TEAT	Milk	MW	MH	\$EN	CW	Marb	RE	Fat	\$AxH	\$AxJ																
EPD	14	-.8	82	152	0.35	1.37	.40	.43	25	.55	.49	4.82	.17	9.4	14	.49	.55	37	109	0.8	-.46	74	.76	1.11	.020	203	204																
Acc	.59	.84	.78	.69	.49	.49	.62	.58	.48	.38	.37	.23	.51	.28	.35	.32	.34	.33	.41	.42	-	.59	.55	.55	.52	-	-																
Rank	5	15	15	10	2	70	60	80	25	75	60	95	10	80	10	60	50	3	10	20	95	10	35	10	55	10	10																

7AN778 RIVERBEND **BLACK LABEL** J1810 \$30



AAA: 20342645

DOB: 7/16/21

TAT: J1810



SCAN
HERE

BALDRIDGE ALTERNATIVE E125

SIRE: SG SALVATION
MGR JP RITA 7037

DAM: E W A 6121 OF 3128 SURE FIRE
E W A 3128 OF 9067 WEIGH UP

- > BLACK LABEL is one of the most impressive specimens you will find. He is super stout and heavy muscled with all kinds of presence and correctness.
- > He offers a great spread from CE to YW, is over +1.00 for both MARB and REA and is in the Top 25% for PAP. It's a pretty unique combination that offers real value!
- > Few bulls offer this body type in a CE package with extra marbling.

From: Riverbend Ranch, ID; Spruce Mountain Ranch, CO; Edisto Pines, SC; Audley Farms and Edgewood Angus LLC, VA; Crazy K Ranch, TN; Dixie Farms, LA; ; Maplebrook Farms and Brumfield Farms, MI; Nowatke Angus, IN; Russ Smith Angus, KS; Express Ranches and Linz Heritage, OK

	\$Values	
\$M	57	60
\$W	73	30
\$F	129	10
\$G	84	10
\$B	213	5
\$C	333	10

EPDs as of 7/22/25														Production										Maternal										Carcass					
	CED	BW	WW	YW	RADG	DMI	YH	SC	DOC	Claw	Angle	PAP	HS	HP	CEM	UDDR	TEAT	Milk	MW	MH	\$EN	CW	Marb	RE	Fat	\$AxH	\$AxJ												
EPD	13	.6	77	140	.31	1.51	.5	1.02	20	.46	.50	-.16	.59	12.1	10	.43	.34	25	94	.8	-.32	79	1.17	1.04	.008	237	228												
Acc	.59	.81	.63	.45	.37	.37	.56	.49	.39	.38	.34	.31	.35	.24	.35	.35	.36	.35	.41	.43	-	.46	.42	.42	.39	-	-												
Rank	10	35	25	20	15	80	50	40	45	40	65	25	65	35	35	75	90	55	20	20	85	5	10	10	40	3	3												

7AN806 CONNEALY **DESIGNER** \$25



AAA: 20667703

DOB: 8/7/22

TAT: 2707



SCAN
HERE

SYDGEN BLUEPRINT

SIRE: S ARCHITECT 9501
S BLOSSOM 7514

DAM: HUWA FULL DISCLOSURE
ENLEEDA OF CONANGA 081J
ENLOVE OF CONANGA 433C

- > An exciting Calving Ease prospect out of the Fall 2023 Connealy Angus sale.
- > In addition to Calving Ease, he offers elite Maternal Value without giving up growth and Marbling.
- > He ranks near the top of the breed for \$M and HP with excellent PAP and HS EPDs as well.
- > Excellent phenotype-5.9 Frame with added muscle shape, depth of rib, and excellent feet.
- > Dam is an exciting young Full Disclosure daughter. Designer, her first calf, ratioed 117 WW and 114 YW.
- > He offers mating flexibility by being an outcross to many Select Sires bulls and an excellent choice for commercial heifer projects.

From: Connealy Angus, NE

	\$Values	
\$M	98	3
\$W	92	4
\$F	113	20
\$G	61	30
\$B	174	25
\$C	324	10

EPDs as of 7/22/25														Production										Maternal								Carcass					
	CED	BW	WW	YW	RADG	DMI	YH	SC	DOC	Claw	Angle	PAP	HS	HP	CEM	UDDR	TEAT	Milk	MW	MH	\$EN	CW	Marb	RE	Fat	\$AxH	\$AxJ										
EPD	12	-.90	84	144	0.25	1.77	.30	2.17	19	.53	.50	-1.36	.20	16.8	8	.46	.43	.26	.63	.10	-.16	69	.88	0.70	.063	185	166										
Acc	.43	.63	.48	.43	.31	.31	.47	.48	.46	.35	.35	.29	.30	.24	.32	.34	.36	.33	.38	.39	-	.38	.35	.34	.31	-	-										
Rank	15	15	10	15	55	90	70	20	50	70	65	10	10	1	50	70	75	50	55	75	50	15	25	45	95	15	15										

7AN580 GAR

HOME TOWN

\$30



AAA: 19266718

DOB: 9/6/18

TAT: 7488

FROM: Gardiner Angus Ranch and
GRCQ LLC, KS; and Robert
Stumpff, VA

SIRE: GAR ASHLAND
GAR EARLY BIRD

CHAIR ROCK AMBUSH 1018

GAR SURE FIRE

DAM: CHAIR ROCK SURE FIRE 6095

CHAIR ROCK PROGRESS 3005



SCAN
HERE



- > HOME TOWN will go down as one of the most influential sires in the breed. He is a perennial sales leader at Select Sires because of his proven calving ease, phenotype and carcass quality.
- > The proof is in the progeny! HOME TOWN is a sure bet at high altitude, ranking in the top 1% for PAP with over 130 progeny.
- > With over 11,000 birthweight records recorded, HOME TOWN is still a go-to CE option and has maintained a breed-leading ranking for Marbling with over 6,000 carcass/ultrasounds recorded.
- > Take the guess work out and use a proven commodity in HOME TOWN!



HOME TOWN daughter,
Spruce Mountain, CO



HOME TOWN son,
7AN700 HOMETOWN HERO



HOME TOWN daughter,
Deer Valley Farms Angus, TN

\$Values		
\$M	71	30
\$W	74	30
\$F	119	15
\$G	113	1
\$B	232	2
\$C	372	2

EPDs as of 7/22/25

EPDs as of 7/22/25	Production													Maternal								Carcass					
	CED	BW	WW	YW	RADG	DMI	YH	SC	DOC	Claw	Angle	PAP	HS	HP	CEM	UDDR	TEAT	Milk	MW	MH	\$EN	CW	Marb	RE	Fat	\$AxH	\$AxJ
EPD	15	-.50	62	117	.30	0.93	.20	.77	23	.61	.45	-2.82	.10	12.7	11	.73	.72	28	45	.20	-8	60	1.73	1.08	-.012	278	248
Acc	.93	.97	.96	.95	.80	0.8	.96	.95	.92	.89	.88	.49	.82	.72	.91	.84	.85	.89	.78	.79	-	.85	.82	.82	.81	-	-
Rank	3	20	65	55	20	40	80	60	30	90	35	1	3	25	25	10	20	35	75	70	30	30	1	10	20	1	2

14AN502 TEHAMA TAHOE B767

\$25



AAA: 17817177

DOB: 9/6/13

TAT: B767

FROM: Tehama Angus Ranch, CA,
VanDerVeen Farms and Cory
VanDerVeen, KS and Jake Swisher, NE

SIRE: TEHAMA SITZ UPWARD 307R
UPWARD Y238
TEHAMA ELITE BLACKBIRD T735
SAV FINAL ANSWER 0035
DAM: TEHAMA MARY BLACKBIRD Y684
TEHAMA MARY BLACKBIRD T073



SCAN
HERE



- > TAHOE is one of the top sires to ever make Select Sires' proven lineup!
- > He is an all-purpose sire topping our sales list year after year due to his multi-trait excellence, consistency and widespread customer satisfaction.
- > TAHOE is best known for fertile and productive siring daughters along with his ability to transmit Hair Shedding.
- > He consistently produces offspring that have proven to be trouble free cattle with longevity.
- > TAHOE drives profit for every segment of the beef industry.



TAHOE daughter,
Hoover Angus, IA



TAHOE daughter,
Myers Angus, KY



TAHOE daughter, Boyd Cattle and
Myers Angus, KY

\$Values


\$M	78	20
\$W	96	2
\$F	93	55
\$G	65	25
\$B	158	40
\$C	283	30

EPDs as of 7/22/25

EPDs as of 7/22/25														Production										Maternal								Carcass					
	CED	BW	WW	YW	RADG	DMI	YH	SC	DOC	Claw	Angle	PAP	HS	HP	CEM	UDDR	TEAT	Milk	MW	MH	\$EN	CW	Marb	RE	Fat	\$AxH	\$AxJ										
EPD	9	.30	79	134	.27	1.19	.20	1.2	23	.52	.48	1.70	-.01	13.5	7	.55	.65	25	61	.10	-.15	54	.89	.70	.022	175	153										
Acc	.94	.98	.97	.95	.74	.74	.96	.95	.93	.88	.88	.60	.83	.80	.91	.87	.88	.91	.87	.88	-	.80	.77	.77	.74	-	-										
Rank	30	30	20	25	40	55	80	30	30	65	50	65	1	15	60	45	30	55	55	75	50	45	25	45	55	15	20										

ADDITIONAL AVAILABLE ANGUS SIREs

ANGUS - Sorted by Name

				PRICE	CE		BW		WW		YW		RADG		DMI		YH		SC		DOC		CLAW		ANGLE		PAP	
Code No.	Reg No.	NAME			EPD	Acc	EPD	Acc	EPD	Acc	EPD	Acc	EPD	Acc	EPD	Acc	EPD	Acc	EPD	Acc	EPD	Acc	EPD	Acc	EPD	Acc	EPD	Acc
14AN590	19469706	BRIGADE	NO	25	4	.70	-0.4	.89	76	.86	142	.78	.32	.44	1.60	.44	0.6	.78	1.19	.75	14	.71	.48	.65	.51	.64	1.07	.35
7AN736	20102244	BRUNSWICK	YES	25	8	.55	0.6	.80	81	.74	133	.59	.24	.49	1.43	.49	0.2	.54	1.54	.58	33	.45	.39	.30	.49	.36	3.70	.26
7AN725	20152901	CAMERON	NO	25	12	.45	-0.2	.71	80	.64	143	.54	.27	.37	2.01	.37	0.7	.55	1.02	.56	12	.36	.47	.29	.48	.29	3.44	.30
7AN525	18875915	COMPOUND	YES	20	20	.71	-2.8	.86	59	.82	110	.72	.31	.39	0.35	.39	0.2	.67	0.6	.66	20	.54	.60	.36	.55	.36	0.52	.32
7AN754	20264601	DEMAND	YES	25	10	.46	-1.3	.65	51	.58	91	.50	.23	.32	0.60	.32	-0.1	.48	1.19	.46	21	.40	.29	.37	.39	.34	-1.50	.23
7AN624	19123898	DUAL THREAT	NO	25	13	.84	-1.0	.94	62	.92	117	.88	.29	.48	1.14	.48	0.7	.92	1.25	.89	27	.84	.41	.72	.37	.71	-1.30	.34
7AN723	19971596	GOOD NEWS	YES	25	13	.67	0.4	.85	79	.80	142	.69	.30	.48	1.75	.48	0.8	.70	1.36	.51	20	.52	.48	.29	.40	.31	2.47	.24
7AN623	19526770	GUARANTEE	YES	25	8	.83	0.3	.94	77	.93	150	.88	.34	.51	1.88	.51	0.3	.86	1.15	.86	27	.75	.59	.63	.54	.62	3.50	.25
7AN700	19862896	HERO	NO	25	4	.49	3.9	.87	80	.84	144	.76	.31	.39	1.63	.39	0.7	.67	0.61	.70	21	.49	.46	.55	.46	.55	-0.28	.31
7AN473	18534952	LEGENDARY	NO	22	9	.88	-0.7	.95	70	.94	113	.91	.21	.61	0.91	.61	.30	.91	0.75	.90	9	.85	.52	.76	.57	.74	1.73	.37
7AN595	19573709	MOVIN ON	NO	25	6	.82	-0.5	.93	60	.90	113	.84	.23	.43	1.74	.43	0.2	.85	0.72	.80	26	.73	.46	.58	.41	.59	-1.89	.33
14AN497	18548853	NEW ADDITION	YES	25	10	.75	-1.2	.90	53	.86	93	.79	.24	.42	0.34	.42	-0.4	.82	0.56	.79	34	.59	.47	.48	.47	.47	2.40	.29
7AN718	20106934	NORTHBOUND	YES	25	14	.40	-1.6	.64	60	.55	104	.50	.25	.34	0.71	.34	0.0	.50	0.69	.45	19	.35	.34	.28	.50	.28	-2.11	.29
7AN594	19401188	REGIMENT	YES	25	9	.84	0.2	.95	93	.93	174	.89	.37	.48	2.09	.48	0.8	.90	1.38	.87	13	.78	.64	.70	.55	.68	1.82	.29
7AN589	19418336	SILVERADO	NO	25	8	.57	0.2	.85	72	.81	131	.71	.27	.42	1.54	.42	0.1	.73	0.36	.71	15	.55	.43	.53	.38	.54	3.66	.31
7AN389	17328461	SURE FIRE	YES	25	12	.93	0.0	.97	54	.97	102	.95	.29	.83	0.52	.83	0.3	.96	2.14	.95	28	.93	.58	.87	.46	.87	-1.08	.67
7AN604	19476453	TOP CUT	YES	25	10	.85	1.0	.95	78	.93	128	.90	.21	.59	1.65	.59	0.1	.93	1.64	.90	28	.87	.34	.85	.44	.84	5.12	.34
7AN629	19570738	TRANSCENDENT	YES	25	14	.81	0.9	.94	67	.91	120	.87	.25	.45	1.46	.45	0.5	.92	-0.06	.90	26	.84	.48	.69	.46	.67	0.35	.27
14AN545	18827829	WALL STREET	YES	8	.75	0.8	.94	.75	.92	139	.87	.29	.53	1.96	.53	0.1	.85	0.75	.85	18	.79	.48	.72	.48	.71	1.47	1.47	.35
7AN600	19544206	WOLVERINE	YES	25	13	.59	-1.7	.81	68	.75	107	.64	.17	.38	1.09	.38	-0.1	.51	-0.28	.65	10	.65	.36	.55	.34	.55	0.41	.29
7AN699	19659010	YELLOWSTONE	NO	25	1	.43	3.7	.73	103	.65	183	.48	.32	.37	2.39	.37	1.5	.57	0.49	.47	14	.38	.62	.32	.39	.32	0.70	.32

AAA EPDs as of 7/22/25 🍁 = Canadian availability



7AN389 SURE FIRE



7AN525 COMPOUND



7AN595 MOVIN ON



7AN600 WOLVERINE



7AN604 TOP CUT

HS	HP	MILK	CEM	TEAT	UDDER	MW	MH	\$EN	CW	MARB	REA	FAT	\$M	\$W	\$F	\$G	\$B	\$C	\$AxH	\$AxJ
EPD	Acc	EPD	Acc	EPD	Acc	EPD	Acc	EPD	Acc	EPD	Acc	EPD	Acc	EPD	Acc	EPD	Acc	EPD	Acc	EPD
.65	.62	11.2	.37	29	.55	11	.59	.48	.56	.55	.54	39	.59	0.6	.63	-6	65	.56	0.54	.51
.35	.36	7.3	.25	20	.34	12	.32	.57	.31	.49	.30	64	.42	0.2	.42	-13	53	.44	1.08	.38
.73	.32	13.7	.24	29	.34	15	.32	.57	.34	.50	.33	74	.42	0.7	.44	-24	79	.46	0.60	.40
.72	.34	14.6	.26	26	.58	13	.57	.40	.37	.44	.35	62	.48	0.2	.49	-16	36	.54	0.95	.48
.31	.27	11.2	.19	15	.35	11	.33	.66	.32	.66	.31	40	.39	-0.1	.40	2	39	.40	0.91	.34
.09	.69	11.6	.44	34	.71	7	.78	.70	.67	.63	.65	56	.65	0.7	.65	-17	63	.80	0.95	.77
.24	.36	14.6	.20	24	.30	13	.28	.37	.28	.41	.27	114	.41	0.8	.41	-41	67	.46	1.02	.41
.57	.39	11.4	.38	25	.70	1	.75	.33	.63	.45	.61	61	.55	0.3	.58	-15	53	.63	0.55	.59
.13	.34	9.3	.25	22	.35	10	.36	.55	.36	.65	.35	72	.44	0.7	.45	-19	80	.55	1.47	.50
.75	.64	10.7	.61	24	.85	8	.83	.72	.79	.73	.78	56	.77	0.3	.74	-12	52	.72	1.22	.68
.34	.54	10.9	.40	19	.59	12	.66	.97	.63	.96	.61	67	.58	0.2	.59	-14	50	.61	0.97	.56
.44	.32	15.1	.31	31	.67	16	.63	.78	.55	.67	.53	24	.60	-0.4	.60	1	37	.67	0.93	.63
.38	.30	12.9	.22	42	.34	10	.31	.37	.33	.23	.32	22	.40	0	.42	-5	37	.41	0.77	.38
.56	.44	9.6	.38	33	.73	3	.78	.38	.71	.39	.68	130	.61	0.8	.57	-55	82	.58	0.72	.54
-.03	.57	14.1	.30	30	.46	7	.48	.57	.50	.47	.48	27	.54	0.1	.53	0	54	.51	0.74	.45
-.01	.82	9.0	.81	27	.93	9	.92	.74	.88	.70	.87	29	.88	0.3	.89	0	46	.89	1.29	.87
.05	.86	19.1	.64	20	.68	13	.77	.76	.80	.65	.79	48	.73	0.1	.67	-5	42	.69	1.63	.65
.25	.60	10.0	.36	20	.58	13	.71	.57	.55	.60	.53	82	.50	0.5	.51	-22	49	.80	2.37	.77
.35	1.01	.59	15.5	.46	18	.76	0.76	.58	.70	.74	.58	74	.68	0.1	.70	-17	65	.66	1.00	.61
.44	.43	10.1	.30	32	.61	10	.66	.32	.49	.34	.47	50	.56	0.6	.58	-13	67	.70	0.97	.66
.82	.34	13.8	.27	30	.35	16	.34	.46	.36	.45	.35	110	.42	1.5	.45	-43	100	.46	0.71	.41

AAA EPDs as of 7/22/25 🇨🇦 = Canadian availability



7AN629 TRANSCENDENT



7AN700 HOME TOWN HERO



7AN736 BRUNSWICK



14AN545 WALL STREET



14AN590 BRIGADE

Understanding Angus Udder and Teat Scoring Data and How to Use the Information

By: Jerry L Emerich, Premier Select Sires Beef Specialist

On May 23 the American Angus Association (AAA) released EPDs for two new traits, Udder Suspension and Teat Size. With the superiority of the Angus cow as the dominant maternal influence in the U.S. beef herd, these traits add more tools for cow/calf operations to continue to make corrective decisions to improve their herds.

To the right is an article produced by Angus Herd Improvement Records (AHIR) explaining how to collect and score these economically important traits. Both traits are scored on a 1–9 linear scale. Udder Suspension is scored from a “1” being very pendulous to a “9” being very tight. Teat Size is scored from a “1” being very large and misshapen to a “9” being very small.

The traits are then incorporated into EPDs including their percentile rank within the population. Lower values (less than 90%) indicate deep udders and large teats, which can lead to lower productivity of the newborn calf due to increased difficulty in the ability to nurse. Higher values (greater than 10%) indicate tighter attached udders and smaller teat size.

When making mating decisions and utilizing this data, one needs to keep in mind that “extremes” are not always the best option. This is especially true for Teat Size. This is actually an “intermediate optimum” trait with a linear score of 4 to 6 or an EPD in the 50 percentile range resulting in a more desirable teat size. A “9” linear score or an EPD in the top 1 percentile range may be “too short” for a calf to effectively nurse.

If a producer has cows within their herd that have deep udders and/or large teats, one should select sires ranking high (greater than 25% Udders and greater than 50% Teat Size) for these traits. If cows have shallow udders, they should continue to use the better Udder sires. If cows have small teats, using sires closer to the “middle of the road” is the best option.

This data is new and there are still some unanswered questions, continuing to use extremely shallow uddered sires may not always be the best practice. Continuing to use extreme shallow udders may not always be the best option either. Check the Milk EPD in relation to Udder Suspension to ensure you are not limiting milk production in the cow herd. Also, these traits need to be used in relationship with other important traits to a profitable cow herd, including Birth, Growth, Carcass and other important Maternal traits including Foot scores, Heifer Pregnancy Rate, etc.



SCORING GUIDELINES

Teat and udder conformation are traits essential to a productive cow. Poor teat or udder quality may lower herd productivity, provides an opportunity to cull females, and increases difficulty for a newborn calf to suckle. The American Angus Association accepts udder scores from members through a simple two category system, teat size and udder suspension. The teat size and udder suspension are scored on the same quarter but are scored independently.

For SUBMISSION OF SCORES, they must be collected with 24 hours of calving. Teat and udder scores can be collected when collecting calf birth weight and calving ease data. Submit information through AAA Login.

Teat Size		Udder Suspension	
Very large & misshapen	1	Very pendulous	1
Large	3	Pendulous	3
Intermediate	5	Intermediate	5
Small	7	Tight	7
Very small	9	Very tight	9

SOURCE: ANGUS HERD IMPROVEMENT RECORDS



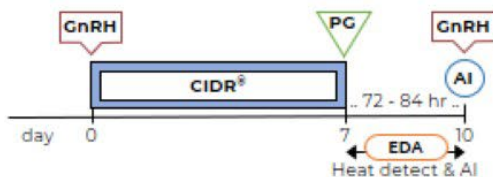
For additional synchronization protocols visit BeefRepro.org

HEAT DETECTION & TAI

For best results perform AI 12 \pm 2 hr after detection of estrus.
Use of estrus detection aids (EDA) is highly recommended.

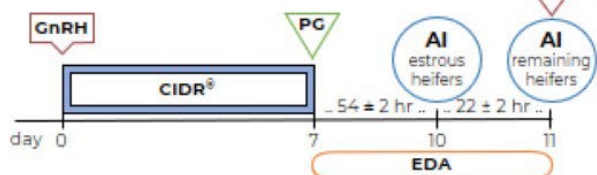
Select Synchron+CIDR® & TAI

Heat detect & AI days 7 to 10 and TAI with GnRH all non-responders 72 - 84 hr after PG.



7-day CO-Synch+CIDR® & Split-TAI

Perform first TAI 54 \pm 2 hr after PG in estrous heifers. Second TAI with GnRH only in non-estrous heifers.



MGA®-PG & TAI

Heat detect & AI days 33 to 36 and TAI with GnRH all non-responders 72 - 84 hr after PG.



14-day CIDR®-PG & TAI

Heat detect & AI days 30 to 33 and TAI with GnRH all non-responders 72 \pm 2 hr after PG.

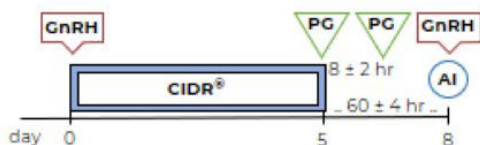


FIXED-TIME AI

Time for Fixed-time AI (TAI) should be considered as the approximate average time of insemination based on the number of females to inseminate, labor, and facilities.

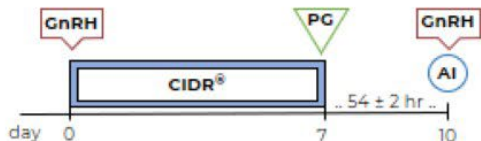
5-day CO-Synch+CIDR®

Perform TAI with GnRH at 60 \pm 4 hr after CIDR removal. Two injections of PG 8 \pm 2 hr apart are required for this protocol.



7-day CO-Synch+CIDR®

Perform TAI with GnRH at 54 \pm 2 hr after PG.



MGA®-PG & TAI

Perform TAI with GnRH at 72 \pm 2 hr after PG.



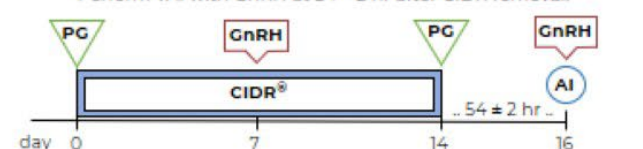
14-day CIDR®-PG & TAI

Perform TAI with GnRH at 66 \pm 2 hr after PG.



7&7 Synch

Perform TAI with GnRH at 54 \pm 2 hr after CIDR removal.



EDA

Aervoe™, AIPaint™, Detect-her™, Estratect™, Kamar™, Mark-her™, Paintstik™, Quick Shot™, Tell Tail™, Twist-Stik™

GnRH

Cystorelin®, Factrel®, Fertagyl®, OvaCyst®, CONABreed®

PG

estroPLAN®, Estrumate®, Lutalyse®, Lutalyse® HighCon, ProstaMate®, SYNCHSURE™



SCAN

These protocol sheets were assembled by the **Beef Reproduction Task Force**. Programs are intended to promote sustainable food production systems by the beef industry through sound reproductive management practices for replacement heifers and postpartum cows. The Beef Reproduction Task Force recommends working with a licensed veterinarian for proper use and application of all reproductive hormones. **Approved 11-19-2024.** www.beefrepro.org

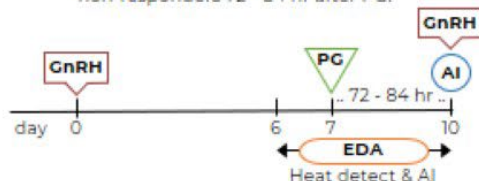
For additional synchronization protocols visit BeefRepro.org

HEAT DETECTION & TAI

For best results perform AI 12 \pm 2 hr after detection of estrus.
Use of estrus detection aids (EDA) is highly recommended.

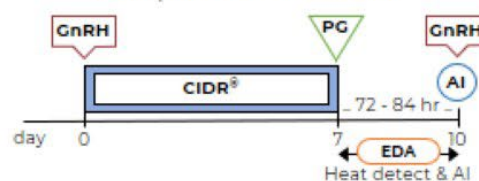
Select Synch & TAI

Heat detect & AI days 6 to 10 and TAI with GnRH all non-responders 72 - 84 hr after PG.



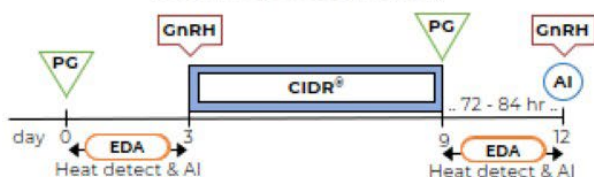
Select Synch+CIDR® & TAI

Heat detect & AI days 7 to 10 and TAI with GnRH all non-responders 72 - 84 hr after PG.



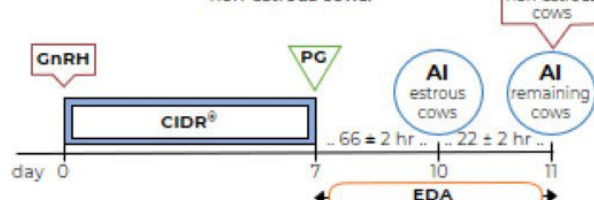
PG 6-day CIDR® & TAI

Heat detect & AI days 0 to 3. Insert CIDR + GnRH to non-responders, heat detect & AI days 9 to 12. TAI with GnRH non-responders 72 - 84 hr after PG and CIDR removal.
Protocol may be used in heifers.



7-day CO-Synch+CIDR® & Split-TAI

Perform first TAI 66 \pm 2 hr after PG in estrous cows. Second TAI with GnRH only in non-estrous cows.



FIXED-TIME AI

Time for Fixed-time AI (TAI) should be considered as the approximate average time of insemination based on the number of females to inseminate, labor, and facilities.

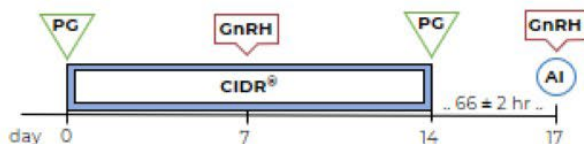
7-day CO-Synch+CIDR®

Perform TAI with GnRH at 60 to 66 hr after PG.



7&7 Synch

Perform TAI with GnRH at 66 \pm 2 hr after CIDR removal.



5-day CO-Synch+CIDR®

Perform TAI with GnRH at 72 \pm 2 hr after CIDR removal. Two injections of PG 8 \pm 2 hr apart are required for this protocol.



Bos indicus PG 5-day+CIDR®

Perform TAI with GnRH at 66 \pm 2 hr after CIDR removal.



EDA

Aervoe™, AIPaint™, Detect-her™, Estroject™, Kamar™, Mark-her™, Paintstik™, Quick Shot™, Tell Tail™, Twist-Stik™

GnRH

Cystorelin®, Factrel®, Fertagyl®, OvaCyst®, GONABreed®

PG

estroPLAN®, Estrumate®, Lutalyse®, Lutalyse® HighCon, ProstaMate®, SYNCHSURE™



SCAN

These protocol sheets were assembled by the **Beef Reproduction Task Force**. Programs are intended to promote sustainable food production systems by the beef industry through sound reproductive management practices for replacement heifers and postpartum cows. The Beef Reproduction Task Force recommends working with a licensed veterinarian for proper use and application of all reproductive hormones. **Approved 11-19-2024.** www.beefrepro.org

SEXED SEMEN OPTIONS

CODE/NAME	M	F	CODE/NAME	M	F
507AN580 HOME TOWN	✓	✓	614AN502 TAHOE	✓	✓
507AN618 MARVEL	✓	✓	507AN363 HORIZON		✓
507AN624 DUAL THREAT		✓	509AN810 VALIDITY		✓
507AN642 VERACIOUS		✓	509AN835 CAPONE		✓
507AN684 GUARD RAIL		✓	509HP125 GOLD RUSH		✓
507AN695 NETWORK		✓	509AN793 HOME RUN	✓	✓
507AN697 COUNTY ROAD		✓	509AR112 CADILLAC	✓	✓
507AN735 GIBSON		✓	507AR100 JUMPSTART	✓	
507AN738 RIVAL	✓	✓	507HP133 VALOR		✓
507AN759 FIREPROOF	✓	✓	507SM65 UNO MAS		✓
507AN769 EASY DECISION		✓	507SM115 PROMOTER		✓
509AN743 CRAFTSMAN	✓	✓	507SM137 DOC		✓
507AN778 BLACK LABEL	✓		509SM149 POINT PROVEN		✓
509AN795 PREEMINENT	✓	✓	509SM151 MANTACHIE		✓
509AN772 DURACELL	✓	✓	509SM141 ALPHA	✓	
509AN805 POWERCAT	✓	✓	507CH114 HISTORIC		✓
509AN768 RISEABOVE	✓	✓			



509 = 4M

507 and 614 = 2M



™gender SELECTED is a trademark of Select Sires Inc. All gender SELECTED semen is processed using Ultraplus™ technology. Ultraplus is a trademark of STGen LLC. Limitations and Conditions of Sale: gender SELECTED semen shall be used only for the single insemination of one female bovine during natural ovulation with the intent to produce a single offspring unless specifically approved on an individual customer basis by Sexing Technologies in writing. As a condition of purchasing gender SELECTED semen, the purchaser agrees that gender SELECTED semen will not be reverse sorted or resorted unless specifically permitted, in advance, on a case-by-case basis by Select Sires in writing. Select Sires intends to monitor the use of the gender SELECTED semen and vigorously enforce these restrictions on use. Please see <http://www.selectsires.com/designations/genderselected.html> for additional details. ©Your Success Our Passion, and the Select Sires logo are registered trademarks of Select Sires Inc., Plain City, Ohio.

NEW SIRES OTHER BREEDS

7SM158
FULL COURT



7CH123
EXPLOSION



7HP136
RUNWAY



7AR115
LEVERAGE



7CH124
BUCKSHOT



7SM154 GW **MEDICINE MAN** 200K **\$30**



PHOTO REVERSED

ASA: 4033441

DOB: 1/28/2022

TAT: 200K



SCAN
HERE

LEACHMAN PROPHET J030Z

SIRE: SOUTHERN FORTUNE TELLER
GW MISS PREM BEEF 246Z

DAM: GW MISS PENDLETON 013H
GW MISS JACKPOT 800F



MEDICINE MAN son,
Triangle J Ranch, NE



MEDICINE MAN son,
T-Heart Ranch, CO

- > MEDICINE MAN offers elite Calving Ease and balanced trait selection. He is a go-to heifer bull for Simmental, SimAngus™ or even British based commercial heifers.
 - > With no Beacon, Sugar C4 or Eagle, he offers an outcross pedigree, making him easy to use on numerous popular pedigrees. His progeny are consistent in type with added body and correctness and thrive in all environments, including high elevation.
 - > His young dam has posted impressive ratios of 3 @ 91 for BW, 2 @ 102 for WW and 2 @ 103 for YW in large competitive contemporary groups.
- From: All Beef LLC, IL; Lyman Livestock, UT and Triangle J Ranch, NE and Gateway Simmentals, MT

EPDs as of 7/22/25

	CE	BW	WW	YW	ADG	MCE	MILK	MWW	STAY	DOC	CW	YG	MARB	BF	REA	Shr	API	TI
EPD	18.3	-6	78.5	130.4	.32	9.9	28.9	68.1	16.3	15.4	59	-.23	.78	-.058	0.9	0	180.8	101.9
Acc	.71	.85	.72	.70	.17	.28	.32	.42	.35	.44	.47	.41	.43	.43	0.53	-	-	-
% Rank	5	1	45	30	25	15	15	25	35	15	10	40	10	25	20	-	3	4

5/8 SM 3/8 AN
HOMO BLACK
HOMO POLLED

7SM158 TJ **FULL COURT** 502M **\$30**



ASA: 4366331

DOB: 1/12/2024

TAT: 502M



SCAN
HERE

SIRE: E & B WILDCAT 9402
E & B LADY PLUS 643

DAM: TJ 366J
GIBBS 8025F RANGER
TJ 93F

- > New for 2025! FULL COURT was the co-high seller at the 2025 Triangle J bull sale in January.
- > He combines elite phenotype with unmatched EPDs and indexes. He ranks in the top 1% for CE and API. He is extremely attractive and balanced, with incredible structure and added depth of body. Truly complete.
- > FULL COURT is the SimAngus™ sire we have been searching for as the go-to sire for use on purebred and commercial heifers. He offers breed leading Calving Ease without sacrificing growth, maternal and end product merit.

From: Triangle J Ranch, NE and Gibbs Farm, AL

EPDs as of 7/22/25

	CE	BW	WW	YW	ADG	MCE	MILK	MWW	STAY	DOC	CW	YG	MARB	BF	REA	Shr	API	TI
EPD	20.7	-6.2	83.4	131.9	.30	11.9	28.1	69.6	17.1	13.4	45.6	0.13	.97	.056	.51	0	194.9	107.8
Acc	.43	.45	.47	.48	.48	.25	.14	.24	.29	.41	.38	.31	.38	.36	.35	-	-	-
% Rank	1	1	30	30	35	2	20	20	30	40	30	99	3	99	80	-	1	2

1/2 SM 1/2 AN
HOMO BLACK
HOMO POLLED

7SM153 BAS **MONEY MAKER** J801 \$40



ASA: 3978845

DOB: 2/20/21

TAT: J801



SCAN
HERE

HOOK'S BLACK HAWK 50B

SIRE: HOOK'S EAGLE 6E

HOOK'S CRYSTAL 1C

HOOK'S BEACON 56B

DAM: BAS MISS BEACON F801

3C CROCUS 6623D B



MONEY MAKER son, Bielenberg Simmental, IA

- > Undoubtedly the most unique and popular blaze face bull in the business! MONEY MAKER offers 10 EPD's or indexes in the top 1%. He will make immense genetic advancement in one generation.
- > While you love his data, MONEY MAKER is equally impressive in person. He is stout featured from the ground up that starts with a big, square impressive foot. He also offers added base width and muscle shape that most CE sires do not have.
- > With 200 progeny in the ASA database, MONEY MAKER's calves have an average BW of 75 lbs with a ratio of 95 and maintain a WW ratio of 106. His young dam has already posted exceptional performance ratios with 4 @ 79 for BW, 4 @ 119 for WW and 3 @ 111 for YW in large contemporary groups.

From: Bielenberg Simmental and Heartland Simmentals, IA

EPDs as of 7/22/25

	CE	BW	WW	YW	ADG	MCE	MILK	MWW	STAY	DOC	CW	YG	MARB	BF	REA	Shr	API	TI
EPD	19.6	-4.1	121.7	192.3	.44	9.9	30.7	91.5	17.8	17.1	74.6	-0.45	0.46	-0.068	1.7	-0.49	194.8	123.5
Acc	0.63	0.75	0.69	0.69	.66	0.35	0.26	0.37	0.42	0.63	0.51	0.4	0.49	0.43	0.48	.06	-	-
% Rank	1	1	1	1	1	5	10	1	25	4	1	20	15	60	1	-	1	1

PB SM
HOMO BLACK
HOMO POLLED

7SM140 LRS **DUTTON** 611K \$30



ASA: 4046516

DOB: 3/11/22

TAT: 611K



SCAN
HERE

ASR AMERICAN PATRIOT F843

SIRE: ASR AMERICAN PROUD H0301

ASR LITTLE DESI D6273

HOOK'S EAGLE

DAM: LRS MS EAGLE 983G

LRS MS CLASS ACT 437B



DUTTON daughter,
Oval F Simmental, MO



DUTTON son,
Trauernicht Simmentals, NE

- > DUTTON is living up to his expectations as calf reports continue to come in! He is a go-to sire for added muscle, performance and phenotype.
- > Breeders continue to demand balance trait bulls with added performance and doability and DUTTON is answering the call. He offers double digit CE yet ranks in the top 10% for WW, YW, STAY, API and TI.
- > DUTTON'S dam by Eagle is a rising star in the breed as she has raised multiple sale topping sires. She is a power cow with added volume and tremendous feet.

From: Trauernicht Simmentals, NE and Lassle Ranch Simmentals, MT and All Beef LLC, IL

EPDs as of 7/22/25

	CE	BW	WW	YW	ADG	MCE	MILK	MWW	STAY	DOC	CW	YG	MARB	BF	REA	Shr	API	TI
EPD	12.4	0	95.2	147.3	.32	5.1	19.7	67.2	20.6	15.3	57.6	-0.43	.39	-0.067	1.44	-0.47	167.8	98.3
Acc	0.59	.77	.61	.62	.59	.33	.21	.33	.37	.53	.52	.37	.42	.37	.44	.04	-	-
% Rank	40	30	10	10	10	65	75	30	10	15	3	25	20	60	1	-	10	10

PB SM
HOMO BLACK
HOMO POLLED

7SM141 M4 **ALPHA** 267K

\$25



SCAN
HERE

ASA: 4104071

DOB: 1/17/2022

TAT: 267K

FROM: M4 Simmentals, KS

WS PROCLAMATION E202

SIRE: LBR5 GENESIS G69

LBR DIANA D69

CONNEALY CONFIDENCE PLUS

DAM: M4 MS BELEAVE 810F

KSU MISS SHEAR FORCE 6Z

- > ALPHA is a rising star in our lineup and is building a reputation as a customer satisfaction sire for added performance and consistent phenotype both in purebred and commercial operations.
- > For those looking for a "bigger" bull, ALPHA offers the extra frame desired without sacrificing correctness and muscle shape.
- > ALPHA will add profit at weaning, yearling or on the grid and will leave daughters that are easy to handle and raise big calves. In a high market where every pound is a premium, ALPHA adds real profit to your bottom line.



EPDs as of 7/22/25

	CE	BW	WW	YW	ADG	MCE	MILK	MWW	STAY	DOC	CW	YG	MARB	BF	REA	Shr	API	TI
EPD	11.4	.50	96.3	155.1	.30	4.1	32.3	80.3	15.5	16.3	65.2	-0.19	.71	-0.03	1.08	-.28	161.2	102.3
Acc	.52	.60	0.54	.53	.81	.31	.24	.33	.37	.52	.45	.36	.44	.4	.42	.05	-	-
% Rank	70	60	5	5	20	90	3	2	45	10	3	50	15	65	5	-	15	4

PB SM
HOMO BLACK
HOMO POLLED

7SM138 CDI/NF **HONOR GUARD** 267H \$30



SCAN
HERE

ASA: 3801515

DOB: 3/11/20

TAT: 267H

FROM: Neidig Farm, NE and C Diamond Ranch, ND

CDI MAVERICK 335B

SIRE: CDI ABUNDANCE 391C

CDI MS YESTERDAY 29B

CDI VERDICT 220Y

DAM: CDI MISS VERDICT 141C

CDI MISS RED COAT 28A

- > HONOR GUARD quickly became a customer satisfaction sire for his consistency in type offering added body, muscle and overall eye appeal. Both his sons and daughters were well received at auction.
- > His EPD package offers balanced trait selection. HONOR GUARD ranks in the Top 25% or better for 12 different traits, and in the Top 20% for both API and TI.
- > Quality, consistency and predictability



EPDs as of 7/22/25

	CE	BW	WW	YW	ADG	MCE	MILK	MWW	STAY	DOC	CW	YG	MARB	BF	REA	Shr	API	TI
EPD	14.4	0.2	87.1	136.5	.37	9.4	24.6	68.1	18.9	15.8	33.3	-0.55	0.24	-0.094	1.29	-.40	156.2	90.9
Acc	0.73	0.87	0.81	0.79	.54	0.38	0.26	0.4	0.39	0.68	0.63	0.46	0.6	0.46	0.57	.03	-	-
% Rank	20	30	25	20	10	10	40	25	15	10	50	3	40	15	3	-	20	20

PB SM
RED
HOMO POLLED

7SM148 RFS **ELECTRIFY** L46

\$30



SCAN
HERE

ASA: 4220293

DOB: 02/27/23

TAT: L46

FROM: Rydeen Farms, MN; Trauernicht Simmentals and Crosshair Simmental Ranch, NE

THSF LOVER BOY B33

SIRE: ROCKIN H CAPTIVATE J75

ROCKIN H MS CAROLINA

CDI VERDICT 220Y

DAM: WS ELECTRA E88

HSF MISS SKY 87U

- > ELECTRIFY is the red sire that will move the red population forward for quality and genetic merit! Study his data closely, he ranks in the top 20% or better for most traits and is highlighted by breed leading predictions for CE, BW, MCE, API and TI.
- > ELECTRIFY is backed by one of the most popular and prolific red donors in the Simmental breed, Electra E88 and is out of the hot outcross sire for Nicholson and Bichler, Captivate.
- > Early calf reports validate his Calving Ease predictions and they exhibit added confirmation and early performance.



EPDs as of 7/22/25

	CE	BW	WW	YW	ADG	MCE	MILK	MWW	STAY	DOC	CW	YG	MARB	BF	REA	Shr	API	TI
EPD	18	-3.2	86.3	135.7	.31	10.8	26.7	69.8	18.3	13.5	32.5	-0.36	0.39	-0.046	1.07	-.35	172.7	97.9
Acc	0.46	.50	.52	.52	.52	.27	.20	.29	.35	.46	.42	.34	.4	.37	.39	.03	-	-
% Rank	2	3	25	20	15	2	25	20	20	30	50	55	20	90	20	-	10	10

PB SM
RED
HOMO POLLED

7SM149 WHF **POINT PROVEN** H45 \$50



ASA: 3780742

DOB: 2/1/20

TAT: H45



SCAN
HERE



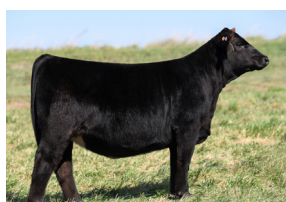
SIRE: CCS/WHF OL 'SON 48F
WHF SUMMER 365C
TJ MAIN EVENT 503B
DAM: WHF DELILAH 45D
WHF ANGELS ENVY 245A

From: Trennepohl Farms, IN and
Wayward Hill Farm, KY

- > POINT PROVEN is just the sire the breed has been waiting for! Few sires offer the versatility to create sale topping sires, elite show heifers as well as cows that thrive and succeed in the pasture.
- > He is a breed leader for Calving Ease and Birthweight ranking in the top 1 and 2% respectively but he also ranks in the top 30% for API and TI.
- > POINT PROVEN is royally bred combining two of the most dominant donors within the breed into one pedigree in Summer 365C and Delilah 45D. Expect daughters to maternal in their look, build and design.



POINT PROVEN daughter,
Trennepohl Farms, IN



POINT PROVEN daughter,
JS Simmentals, IA



POINT PROVEN son,
WHF Simmentals, KY



POINT PROVEN daughter,
Mid-Am Genetics, KS

EPDs as of 7/22/25

	CE	BW	WW	YW	ADG	MCE	MILK	MWW	STAY	DOC	CW	YG	MARB	BF	REA	Shr	API	TI
EPD	17.9	-4	75.7	111.3	.22	10.6	19.8	57.6	11.4	11.9	33.5	-.38	.25	-.092	.78	-.34	147	87.9
Acc	.60	.07	.58	.58	.61	.36	.22	.32	.41	.51	.52	.38	.50	.41	.43	.04	-	-
% Rank	2	1	65	65	70	3	75	75	85	50	45	45	40	15	75	-	30	30

PB SM
HOMO BLACK
HOMO POLLED

7SM151 STCC **MANTACHIE** 105L \$40



ASA: 4288876

DOB: 02/27/23

TAT: 105L

FROM: Trennepohl Farms, IN; Sleepy Hollow Farm, OH; and Jesse Hoblyn Livestock, NE

VCL FORESIGHT

SIRE: STCC TECUMSEH 058J
HF SERENA

PROFIT

DAM: GUARDIAN ANGEL 032H
ANGEL 1B



SCAN
HERE



- > MANTACHIE is bred for success! His lineage runs deep with showing success. His dam is a full sister to Bloomberg and Dameron's famous Triple Crown winner, Mari, and another full sister was recently crowned Champion Bred and Owned female at the National Classic in Tulsa last summer!
- > He is ultra-attractive with added hip and foot size and has the blaze faze for extra measure. With genderSELECTED™ female semen available you can take the guess work out of your mating and create your next champion today!

EPDs as of 7/22/25

	CE	BW	WW	YW	ADG	MCE	MILK	MWW	STAY	DOC	CW	YG	MARB	BF	REA	Shr	API	TI
EPD	5.4	4.6	80.2	108.3	.18	1.5	12.1	52.1	16.2	2.9	29.4	-.39	.20	-.089	.77	-.39	121.5	75.5
Acc	.43	.46	.45	.45	.45	.23	.18	.26	.36	.41	.41	.33	.38	.36	.38	.03	-	-
% Rank	99	95	45	70	90	99	99	95	45	99	60	40	45	25	75	-	70	70

PB SM
HOMO BLACK
HOMO POLLED

7SM142 JC MR **PONTIAC** D114K \$30



ASA: 4029546
 DOB: 2/24/22
 TAT: JCD114K
 FROM: JC Simmentals, MI; Rydeen Farms, MN and Cow Camp Ranch, KS
 GIBBS 7382E BROAD RANGE
SIRE: GIBBS 9114G ESSENTIAL
 GIBBS 7153E STAR 0589X
 GIBBS 4475B PIRATE
DAM: FSCR D114 LUCILLE B089XP
 FSCR B089 RKE 107



SCAN
HERE



- > Searching for balanced trait selection without extremes? Take notice of PONTIAC! He offers 10 traits in the top 25%.
- > His sons were very well accepted in his first season of use with many of them going to purebred breeders and progressive commercial cattlemen.
- > PONTIAC's impressive individual performance ratios of 89 for BW, 106 for WW and 109 for YW combined with his impressive physical structure and outcross pedigree make him a popular choice.

EPDs as of 7/22/25

	CE	BW	WW	YW	ADG	MCE	MILK	MWW	STAY	DOC	CW	YG	MARB	BF	REA	Shr	API	TI
EPD	14.4	.20	87.1	136.5	.37	9.4	24.6	68.1	18.9	15.8	33.3	-.55	.24	-0.094	1.29	-.40	156.2	90.9
Acc	.73	.87	.81	.79	.54	.38	.26	.40	.39	.68	.63	.46	.60	0.46	0.57	.05	-	-
% Rank	20	30	25	20	10	10	40	25	15	10	50	3	40	15	3	-	20	20

3/4 SM 1/4 AN
 HOMO BLACK
 HOMO POLLED

7SM133 TJ **GOLD STRIKE** 506J \$25



ASA: 3909662
 DOB: 1/24/21
 TAT: 506J
 FROM: Trauernicht Simmentals and Triangle J Ranch, NE
 HOOK'S EAGLE 6E
SIRE: TJ GOLD 274G
 TJ 12C
 TJ NEW TIME LINE 113X
DAM: TJ 52A
 T J MISS DAY R1



SCAN
HERE



- > GOLD STRIKE is an impressive mature bull with structural integrity, added length and eye appeal.
- > His dam offers an outcross pedigree and has posted impressive ratios for BW of 92 (7) and WW of 113 (7). GOLD STRIKE is offering the same performance we expected with 187 progeny reported and a WW ratio of 102. With over 300 progeny in the database, GOLD STRIKE offspring are ratioing 102 for WW and YW.
- > GOLD STRIKE is a 3/4 blood which gives mating flexibility!

EPDs as of 7/22/25

	CE	BW	WW	YW	ADG	MCE	MILK	MWW	STAY	DOC	CW	YG	MARB	BF	REA	Shr	API	TI
EPD	12.1	.70	95.2	149.7	.34	6	26.2	73.2	15.9	13.2	52.2	-.14	.36	-.002	.97	0	141.4	91.4
Acc	.66	.81	.77	.74	.73	.38	.25	.37	.46	.61	.5	.40	.50	.44	.47	-	-	-
% Rank	60	65	10	10	15	70	30	10	40	40	15	65	55	85	15	-	45	20

3/4 SIM 1/4 AN
 HOMO BLACK
 HOMO POLLED

7SM122 SCHOOLEY **STANDOUT** 27G \$25



ASA: 3585120
 DOB: 2/7/19
 TAT: 27G
 FROM: Lazy C Diamond Ranch, ND and Schooley Cattle Co., IA
 WS ALL-AROUND Z35
SIRE: OMF EPIC E27
 OMF TIME LESS B100
 CCR COWBOY CUT 5048Z
DAM: CLRS BEAUTY QUEEN 420 B
 TSN MISS 1407 P146



SCAN
HERE



- > STANDOUT has established himself as the calving ease expert not only in the Select Sires lineup but within the breed. At over 90% accuracy he ranks in the top 10% for BW making him a safe bet for heifers.
- > He is a highly proven commodity that customers keep going back to for added phenotype and extra docility in a calving ease package.
- > STANDOUT daughters in production are moderate framed and good uddered.


EPDs as of 7/22/25

	CE	BW	WW	YW	ADG	MCE	MILK	MWW	STAY	DOC	CW	YG	MARB	BF	REA	Shr	API	TI
EPD	15.3	-.2	65.5	91.5	.16	8.8	17.4	50.1	17.8	18	24.5	-.19	.45	-.048	.43	-.48	157.1	82.3
Acc	.81	.91	.88	.86	.87	.60	.53	.62	.50	.79	.64	.51	.66	.57	.65	.08	-	-
% Rank	10	10	95	95	99	15	90	99	25	2	80	99	15	90	99	-	20	45

PB SM
 HOMO BLACK
 HOMO POLLED

ALL AVAILABLE SIMMENTAL SIREs

PUREBRED AND PERCENTAGE SIMMENTAL - Sorted by name

				CE		BW		WW		YW		MCE		MILK		MWW		STAY		DOC		CW		YG		MARB		FAT		REA		API		TI
Code No.	Reg No.	Code Name		EPD	Acc	EPD	Acc	EPD	Acc	EPD	Acc	EPD	Acc	EPD	Acc	EPD	Acc	EPD	Acc	EPD	Acc	EPD	Acc	EPD	Acc	EPD	Acc	EPD	Acc	EPD	Acc	EPD		
7SM142	4104071	ALPHA	YES	11.4	.52	0.5	.60	96.3	.54	155.1	.53	4.1	.31	32.3	.24	80.3	.33	15.5	.37	16.3	.52	65.2	.45	-0.19	.36	.71	.44	-0.030	.40	1.08	.42	161.2	102.3	
7SM104	3404807	BROAD RANGE	YES	15.2	.81	-2.2	.92	87.6	.90	148.0	.90	9.2	.73	20.5	.73	64.2	.78	12.3	.63	13.8	.85	50.5	.70	-0.14	.55	.31	.71	.017	.65	1.12	.68	152.0	94.2	
7SM121	3620331	COPPERHEAD	YES	0.8	.69	5.2	.89	111.4	.84	154.8	.83	2.1	.60	19.0	.56	74.6	.64	15.1	.42	13.2	.72	41.1	.65	-0.35	.47	.19	.67	-.067	.47	0.98	.61	124.5	93.0	
7SM137	3946541	DOC	YES	9.0	.61	1.4	.69	87.2	.62	128.2	.62	5.3	.37	21.4	.29	64.9	.38	12.8	.44	7.5	.50	43.4	.55	-0.26	.40	.09	.49	-.061	.41	0.79	.48	123.3	82.6	
7SM140	4046516	DUTTON	YES	12.4	.59	0.0	.77	95.2	.61	147.3	.62	5.1	.33	19.7	.21	67.2	.33	20.6	.37	15.3	.53	57.6	.52	-0.43	.37	.39	.42	-.067	.37	1.44	.44	167.8	98.3	
7SM148	4220293	ELECTRIFY	NO	18.0	.46	-3.2	.50	86.3	.52	135.7	.52	10.8	.27	26.7	.20	69.8	.29	18.3	.35	13.5	.46	32.5	.42	-0.36	.34	.39	.40	-.046	.37	1.07	.39	172.7	97.9	
7SM139	3886910	EMBLEM	YES	9.0	.67	-1.1	.77	83.3	.71	125.3	.69	2.9	.37	27.9	.26	69.5	.37	20.2	.44	12.9	.58	33.2	.54	-0.3	.40	.56	.49	-.044	.44	0.90	.47	167.8	96.1	
7SM158	4366331	FULL COURT	NO	20.7	.43	-6.2	.45	83.4	.47	131.9	.48	11.9	.25	28.1	.14	69.6	.24	17.1	.29	13.4	.41	45.6	.38	0.13	.31	.97	.38	.056	.36	0.51	.35	194.9	107.8	
7SM133	3909662	GOLD STRIKE	YES	12.1	.66	0.7	.81	95.2	.77	149.7	.74	6.0	.38	26.2	.25	73.2	.37	15.9	.46	13.2	.61	52.2	.50	-0.14	.40	.36	.50	-.002	.44	0.97	.47	141.4	91.4	
7SM113	3568376	HIGHLIFE	NO	15.0	.78	0.9	.93	88.1	.90	138.3	.89	8.3	.68	27.7	.73	71.6	.78	19.2	.50	5.9	.82	36.8	.72	-0.54	.55	.05	.74	-.130	.64	1.02	.67	146.4	86.3	
7SM134	3701575	HILGER ONE	NO	9.8	.72	0.1	.88	102.5	.85	160.0	.85	5.8	.46	23.5	.35	74.7	.47	19.2	.34	18.1	.72	67.8	.55	-0.14	.43	.44	.54	-.046	.45	0.83	.53	153.3	97.8	
7SM91	2891336	MAIN EVENT	NO	12.7	.83	0.2	.95	87.3	.93	132.6	.92	3.8	.84	24.7	.87	68.3	.90	11.6	.80	11.2	.89	44.5	.78	-0.35	.60	.16	.80	-.078	.74	0.93	.79	120.8	83.0	
7SM125	3801544	MAJOR IMPACT	YES	9.4	.62	3.0	.81	93.3	.79	138.0	.78	6.5	.42	19.7	.33	66.3	.45	13.2	.40	13.6	.59	47.6	.61	-0.5	.45	-.04	.59	-.068	.49	1.53	.54	118.3	82.1	
7SM151	4288876	MANTACHIE	YES	5.4	.43	4.6	.46	80.2	.45	108.3	.45	1.5	.23	12.1	.18	52.1	.26	16.2	.36	2.9	.41	29.4	.41	-0.39	.33	.20	.38	-.089	.36	0.77	.38	121.5	75.5	
7SM154	4033441	MEDICINE MAN	YES	18.3	.71	-6.0	.85	78.5	.72	130.4	.70	9.9	.28	28.9	.32	68.1	.42	16.3	.35	15.4	.44	59.0	.47	-0.23	.41	.78	.43	-.058	.43	0.90	.53	180.8	101.9	
7SM153	3978845	MONEY MAKER	NO	19.6	.63	-4.1	.75	121.7	.69	192.3	.69	9.9	.35	30.7	.26	91.5	.37	17.8	.42	17.1	.63	74.6	.51	-0.45	.40	.46	.49	-.068	.43	1.70	.48	194.8	123.5	
7SM141	4029546	PONTIAC	YES	17.3	.68	-2.3	.85	86.6	.82	133.9	.80	10.1	.28	24.8	.29	68.0	.41	20.8	.37	11.0	.66	47.3	.54	-0.2	.40	.66	.51	-.018	.43	0.97	.48	176.5	98.1	
7SM115	3613881	PROMOTER	YES	11.9	.63	1.7	.80	94.3	.74	157.8	.71	4.3	.48	20.3	.38	67.3	.49	10.8	.45	11.6	.61	43.8	.62	-0.47	.48	.21	.62	-.080	.52	1.28	.60	124.3	87.5	
7SM112	3644912	REST EASY	YES	10.0	.72	-1.2	.84	85.6	.79	131.2	.76	1.0	.49	18.8	.40	61.5	.50	13.8	.36	12.9	.64	37.6	.63	-0.4	.48	-.04	.62	-.060	.52	1.16	.58	125.5	82.5	
7SM65	2532016	UNO MAS	NO	14.0	.86	-1.5	.95	63.2	.92	82.1	.89	3.2	.80	18.5	.85	50.0	.88	13.4	.73	10.7	.87	-0.7	.84	-0.42	.61	.45	.81	-.105	.77	0.36	.79	145.0	81.0	
7SM80	2725666	WIDE RANGE	NO	12.9	.84	-0.3	.95	81.0	.92	129.6	.93	7.9	.83	5.6	.87	46.0	.89	13.6	.79	11.4	.88	25.7	.82	-0.44	.62	-.05	.82	-.037	.77	1.30	.81	126.0	78.0	



7SM121 COPPERHEAD



7SM139 EMBLEM



7SM104 BROAD RANGE



7SM113 HIGHLIFE



7SM137 DOC

7AR111 FEDDES **AMSTERDAM** 3212 \$25



EPDs as of 7/22/25

	ProS	HB	GM	CED	BW	WW	YW	ADG	DMI	MILK	ME	HPG	CEM	STAY	Marb	YG	CW	REA	FAT
EPD	145	92	53	18	-3.4	70	112	0.26	1.07	32	5	6	11	22	.49	.09	27	.19	.03
Acc	-	-	-	44	49	46	47	47	31	15	12	9	22	31	38	30	39	35	33
% Rank	12	5	46	6	23	40	41	43	76	8	57	98	7	1	40	55	43	39	66

ARA: 4787662

DOB: 1/20/23

TAT: 3212

FROM: Feddes Red Angus, MT

BASIN HOBO 0545

SIRE: TAC DRIFTER H10

TAC MS VERA F66 ET

BIEBER SPARTACUS A193

DAM: FEDDES BLOCKANA E38-170

FEDDES BLOCKANA B45-E38

- > AMSTERDAM is moderate framed, heavy muscled, and structurally sound. To validate his muscle definition, he ratioed 121 on his REA scan.
- > His dam is a great young 14AR2073 SPARTACUS daughter that recorded a 105 WW ratio. His grandam has posted impressive WW ratios of 5@108. The cow family is known for fertility, calf performance, and udder quality.
- > Sired by the now deceased TAC Drifter, AMSTERDAM offers Calving Ease without sacrificing phenotype, growth, and carcass value.



SCAN
HERE



7AR94 BIEBER **BLUE CHIP** H302 \$25



EPDs as of 7/22/25

	ProS	HB	GM	CED	BW	WW	YW	ADG	DMI	MILK	ME	HPG	CEM	STAY	Marb	YG	CW	REA	FAT
EPD	202	110	92	18	-5.6	69	113	.27	1.11	24	-4	11	11	21	1.17	.04	22	.38	.04
Acc	-	-	-	76	88	84	83	83	46	35	33	43	42	48	55	46	62	56	49
% Rank	1	1	6	6	5	43	39	36	79	69	17	57	4	2	1	35	57	16	87

ARA: 4303789

DOB: 2/27/20

TAT: H302

FROM: Bieber Red Angus Ranch, SD

PIE STOCKMAN 4051

SIRE: BIEBER CL STOCKMARKET E119

BIEBER CL ADELLE 475C

BIEBER IRON ORE A104

DAM: BIEBER ROSE 162C

BIEBER ROSE 475A

- > BLUE CHIP is a 6.0 frame with added length of body, depth of rib and excellent feet.
- > He had individual ratios of 86 BW, 103 WW, 103 YW and 137 for IMF.
- > In addition to his elite Calving Ease, he provides multi-trait balance ranking near the top of the breed for all three indexes GridMaster, HerdBuilder and ProS.
- > One of the highest Marbling EPD bulls in our Red Angus lineup.
- > An excellent choice for commercial Red Angus matings where Calving Ease and Calf Vigor are a must.



SCAN
HERE



7AR115 LSF JLM **LEVERAGE** 3865L \$40



EPDs as of 7/22/25

	ProS	HB	GM	CED	BW	WW	YW	ADG	DMI	MILK	ME	HPG	CEM	STAY	Marb	YG	CW	REA	FAT
EPD	136	40	96	17	-4.7	81	130	.31	1.02	25	18	11	10	14	.99	.15	40	.31	.05
Acc	-	-	-	43	47	45	45	45	34	21	11	7	24	34	42	32	40	37	35
% Rank	14	76	2	6	8	8	9	13	79	59	98	53	8	63	1	88	7	22	95

ARA: 4886000

DOB: 8/27/23

TAT: 3865L

FROM: Bieber Red Angus, SD; Bottomley Cattle Company, NC; Ludvigson Stock Farms, MT and JL Morris Farm, GA

CONNEALY CONFIDENCE PLUS

SIRE: BROWN CRSB CONFIDENCE G1410

BROWN MS MISSION STMT B542

BROWN PREMIER X7876

DAM: TBJR DELLA 502

LSF TBJ DELLA X0238 A3421

- > LEVERAGE is the \$130,000 sale topper and one of the most sought after Red Angus sires to sell in 2025.
- > His dam TBJR Della 502 is one of the top phenotype females in the Red Angus breed, as she is loaded with muscle, volume, with excellent feet and udder quality.
- > Provides excellent mating flexibility, as he is an ideal sire to use on 7AR100 JUMPSTART, 7AR86 STOCKMARKET, 7AR94 BLUE CHIP and 7AR87 FRANCHISE daughters.



SCAN
HERE



7AR100 BIEBER **JUMPSTART** J137

\$30



ARA: 4463653

DOB: 1/20/21

TAT: J137



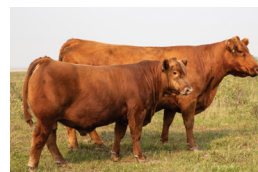
SCAN
HERE

BIEBER CL ATOMIC C218

SIRE: BIEBER CL ENERGIZE F121
BIEBER CL ADELLE 575D

GMRA TRINITY 5222

DAM: BIEBER GALLEE 390G
BIEBER GALLEE 550D



JUMPSTART son, Twedt Red
Angus, ND (photo reversed)

JUMPSTART son, Bieber
Red Angus, ND

- > Phenotype, performance, and carcass merit in one complete package.
- > Power bull loaded with muscle, depth of rib and length of body in a 6.2 frame score.
- > JUMPSTART was an eye catcher from the start and his progeny are showing explosive growth with added muscle shape and length of body.
- > One of the top performance bulls in the breed today, providing the opportunity to make multi-trait improvement, while adding phenotype and carcass merit.
- > A Red Angus sales leader at Select Sires, that is being used in both purebred and crossbreeding programs where added performance, growth and phenotype are a must.

From: Bieber Red Angus Ranch, SD; Schuler-Olsen Ranches, NE; Twedt Red Angus, ND; Wedel Beef Genetics and Anderson Land and Cattle, KS

EPDs as of 7/22/25

	ProS	HB	GM	CED	BW	WW	YW	ADG	DMI	MILK	ME	HPG	CEM	STAY	Marb	YG	CW	REA	FAT
EPD	104	49	55	16	-2.8	97	166	0.43	1.58	29	30	14	10	16	0.37	0.01	32	0.56	0.04
Acc	-	-	-	75	92	89	90	90	45	21	40	45	33	42	61	39	58	47	38
% Rank	49	54	44	15	32	2	1	1	96	24	99	20	13	38	60	24	30	6	81

7AR112 PIE **CADILLAC** 3289

\$40



ARA: 4865308

DOB: 2/27/23

TAT: 3289



SCAN
HERE

CONNEALY CONFIDENCE PLUS

SIRE: BROWN CRSB CONFIDENCE G1410
BROWN MS MISSION STMT B542

9 MILE FRANCHISE 6305

DAM: TKP BONNE BEL
TKP BONNE BEL 110

- > One of the highlight Red Angus bulls of the 2024 sale season, this bull does so many things right with his amazing phenotype, ideal feet and legs and performance loaded data set.
- > His dam is a beautiful Franchise daughter with a picture perfect udder and an excellent production record of 97 BW, 109 WW, 112 YW on four calves giving her a 107 MPPA.
- > CADILLAC's sire Confidence G1410, is one of the most sought after sires in the breed and is now deceased with limited semen available.
- > PIE CADILLAC 3289 is sure to be a breed changer with a chance to make an explosive impact on the Red Angus breed.

From: Pieper Red Angus, NE; Feddes Red Angus, MT; Twedt Red Angus, ND

EPDs as of 7/22/25

	ProS	HB	GM	CED	BW	WW	YW	ADG	DMI	MILK	ME	HPG	CEM	STAY	Marb	YG	CW	REA	FAT
EPD	137	53	84	16	-3	88	147	0.37	1.65	32	20	11	9	17	.55	0	53	.74	.02
Acc	-	-	-	46	52	46	47	47	35	19	9	0	24	33	39	33	41	39	34
% Rank	17	47	11	14	29	5	4	4	97	9	98	53	24	29	31	21	4	3	56

7AR107 BIEBER CHECKMATE K126 \$30



ARA: 4620529
DOB: 01/18/22
TAT: K126
FROM: Bieber Red Angus Ranch, SD



SIRE: WFL FRANKLY F8276
LARR PAYCHECK 0728
LARR MISS CC FLOWER 7528
BIEBER CL STOCKMAN E116
DAM: BIEBER PRIMROSE 225H
BIEBER PRIMROSE 526D

- > A highlight bull in the 2023 Bieber Red Angus Sale. His first son to sell was a phenotype standout and the high selling bull on the 2025 Bieber Red Angus Sale.
- > He is moderate framed with added muscle shape, depth of rib and excellent feet.
- > He recorded individual ratios of 126 for IMF and 108 for REA.
- > He can provide lots of mating flexibility as he is sired by LARR Paycheck, an outcross to most of the Select Sires Red Angus pedigrees.

EPDs as of 7/22/25

	ProS	HB	GM	CED	BW	WW	YW	ADG	DMI	MILK	ME	HPG	CEM	STAY	Marb	YG	CW	REA	FAT
EPD	110	49	61	15	-3.9	97	149	0.32	1.57	25	11	15	10	11	.76	-.02	29	.62	.04
Acc	-	-	-	63	78	69	71	71	31	16	25	10	28	34	50	37	48	45	36
% Rank	42	55	34	27	17	2	4	14	96	60	84	14	10	87	11	15	38	5	80

7AR103 STRA SARGENT 2019 \$30



ARA: 4657003
DOB: 2/19/22
TAT: 2019
FROM: Twedt Red Angus, ND



SIRE: PIE ONE OF A KIND 352
TJ 12C
BIEBER SPARTACUS A193
DAM: STRA TINA 662
STRA TINA 457

- > A phenotype standout with added muscle and dimension in one complete package.
- > Extra pounds are worth a premium and SARGENT is a breed leader for WW and YW.
- > He offers extra growth without adding frame and mature cow size.
- > Foot quality is a family trait and is exhibited by SARGENT. He has great shape to his foot and depth of heel.
- > SARGENT is backed by a highly proven, powerful SPARTACUS daughter that is blazing her own trail as a lead donor for Twedt Red Angus.

EPDs as of 7/22/25

	ProS	HB	GM	CED	BW	WW	YW	ADG	DMI	MILK	ME	HPG	CEM	STAY	Marb	YG	CW	REA	FAT
EPD	97	56	41	16	-2.8	88	138	0.32	1.35	31	14	10	10	15	.50	.17	25	.03	.04
Acc	-	-	-	51	59	51	50	50	26	22	10	7	28	37	39	32	42	38	34
% Rank	57	43	67	15	32	5	8	16	91	12	92	74	8	43	38	83	49	66	86

7AR89 HXC GRINDSTONE 9908G \$25



RAA: 4187454
DOB: 2/4/19
TAT: 9908G
FROM: Hueftle Cattle Co., NE



SIRE: LEACHMAN PLEDGE A282Z
HXC ALLEGIANCE 5502C
HXC 100Y
SPUR FRANCHISE OF GARTON
DAM: HXC 605D
HXC 905W


- > Phenotype, performance and carcass merit in one complete package.
- > Power bull loaded with muscle, depth of rib and length of body in a 6.2 frame score.
- > His dam 605D, is a proven star in the Hueftle herd with excellent udder quality and feet.
- > Progeny reports are very favorable, as calves exhibit added muscle shape and length of body with excellent performance.

EPDs as of 7/22/25

	ProS	HB	GM	CED	BW	WW	YW	ADG	DMI	MILK	ME	HPG	CEM	STAY	Marb	YG	CW	REA	FAT
EPD	116	28	88	8	1.3	79	133	.34	1.45	28	10	11	8	11	.62	-.01	48	.57	0
Acc	-	-	-	68	88	86	85	85	48	51	37	50	57	45	63	43	55	55	42
% Rank	35	83	8	92	90	16	11	9	94	30	80	68	36	86	23	17	7	6	26

ALL AVAILABLE RED ANGUS SIRES

RED ANGUS - Sorted by name

RED ARMS				ProS		HB	GM	CE		BW		WW		YW		DMI		MM		ME		HPG		CEM		STAY		MARB		YG		CW		REA		FAT	
Code No.	Reg No.	Code Name		EPD	Acc	EPD	Acc	EPD	Acc	EPD	Acc	EPD	Acc	EPD	Acc	EPD	Acc	EPD	Acc	EPD	Acc	EPD	Acc	EPD	Acc	EPD	Acc	EPD	Acc	EPD	Acc	EPD	Acc	EPD	Acc	EPD	Acc
7AR111	4787662	AMSTERDAM	YES	145	92	53	18	44	-3.4	49	70	46	112	47	1.07	31	32	15	5	12	6	9	11	22	22	31	0.49	38	0.09	30	27	39	0.19	35	.03	33	
7AR88	3493671	BLAZIN STEEL	YES	139	87	52	16	74	-4.3	87	63	84	102	84	0.72	35	32	64	3	37	13	56	11	57	18	42	0.38	58	0.16	44	31	58	-0.06	53	.02	48	
7AR94	4303789	BLUE CHIP	YES	202	110	92	18	76	-5.6	88	69	84	113	83	1.11	46	24	35	-4	33	11	43	11	42	21	48	1.17	55	0.04	46	22	62	0.38	56	.04	49	
7AR112	4865308	CADILLAC	YES	137	53	84	16	46	-3	52	88	46	147	47	1.65	35	32	19	20	9	11	0	9	24	17	33	0.55	39	0.00	33	53	41	0.74	39	.02	34	
7AR107	4620529	CHECKMATE	YES	110	49	61	15	63	-3.9	78	97	69	149	71	1.57	31	25	16	11	25	15	10	10	28	11	34	0.76	50	-0.02	37	29	48	0.62	45	.04	36	
7AR98	4232984	END ZONE	YES	203	107	96	14	69	-4.7	81	61	74	98	74	0.90	43	29	31	-2	22	20	34	9	42	19	47	1.24	56	0.01	45	21	59	0.23	56	.01	46	
7AR85	3774413	EXCELLENCE	NO	119	68	52	18	76	-6.8	89	53	84	87	86	0.49	55	28	66	1	45	14	55	10	60	16	48	0.45	62	-0.16	42	8	54	0.20	50	-.03	47	
7AR89	4187454	GRINDSTONE	NO	116	28	88	8	68	1.3	88	79	86	133	85	1.45	48	28	51	10	37	11	50	8	57	11	45	0.62	63	-0.01	43	48	55	0.57	55	.00	42	
7AR100	4463653	JUMPSTART	YES	104	49	55	16	75	-2.8	92	97	89	166	90	1.58	45	29	21	30	40	14	45	10	33	16	42	0.37	61	0.01	39	32	58	0.56	47	.04	38	
7AR115	4886000	LEVERAGE	YES	136	40	96	17	43	-4.7	47	81	45	130	45	1.02	34	25	21	18	11	11	7	10	24	14	34	0.99	42	0.15	32	40	40	0.31	37	.05	35	
14AR2091	1725295	NIGHT FOCUS	YES	135	56	79	13	73	-2.3	87	75	84	111	83	0.78	55	24	62	-6	41	19	53	7	58	9	48	0.93	60	0.22	49	37	62	0.07	63	.05	51	
7AR83	3593074	PERSEVERANCE	NO	62	-3	64	12	63	-2.3	75	63	68	111	67	0.36	44	26	50	18	28	15	44	4	45	9	37	0.52	50	0.10	37	14	49	-0.03	41	.03	44	
7AR103	4657003	SARGENT	YES	97	56	41	16	51	-2.8	59	88	51	138	50	1.35	26	31	22	14	10	10	7	10	28	15	37	0.50	39	0.17	32	25	42	0.03	38	.04	34	
14AR2093	3778501	SUPREMACY	YES	118	62	56	15	74	-3.0	87	60	84	105	84	0.44	39	18	67	8	50	16	71	10	58	14	48	0.37	66	0.02	51	16	66	0.10	62	.01	57	
14AR2094	1701524	TOPGUN	YES	108	35	73	19	79	-6.3	90	58	87	94	88	0.50	55	20	78	-1	54	20	79	8	69	8	66	0.72	72	-0.12	55	11	73	0.11	67	-.04	67	

the GELBIEH LINEUP

7GV10 ALL AMERICAN J109

\$25



AMG: AMGV1537675

DOB: 1/28/2022

TAT: JKGF J109



SCAN
HERE

TPG JACKPOT 7551 B ET

SIRE: TPG FRONTRUNNER 2510F

MS WARDON 2510Z ET

CAROLINA LEVERAGE 3214A

DAM: F109 ET

HATTIE B C106ET



ALL AMERICAN's Dam

- > Gelbvieh genetics complement so many breeds. We only offer one and he's a good one.
- > ALL AMERICAN's progeny data shows average BW and above average weaning growth. Add to this his high rankings for HP and Marbling and you see why we're high on this bull.
- > Made-right with an ideal structure, above average depth of body and a great attitude; get added pounds, higher carcass premiums and useful females from ALL AMERICAN.

From: J&K Gelbvieh Farms, IL and Coles Bend Cattle Co, KY

EPDs as of 8/12/25

	CED	BW	WW	YW	MILK	TM	MILK	CEM	HP	PG30	STAY	DOC	SC	DMI	YG	CW	MARB	CFAT	ADG	\$Cow	FPI	EPI
EPD	12	-.6	87	131	21	64	21	7	13.86	3.52	18	9	.70	-.062	-.23	30	.69	-.01	-.029	141.56	99.09	120.50
Acc	.69	.86	.80	.78	.25	-	.25	.38	.11	.07	.44	.67	.59	.07	.42	.56	.54	.43	.06	-	-	-
% Rank	55	35	5	10	65	25	65	40	5	5	25	85	45	17	40	55	1	90	75	15	1	15

7HP136 BOYD **RUNWAY** 4028

\$30



AHA: 44552328

DOB: 1/7/24

TAT: 4028

FROM: Boyd Beef Cattle, Dale Stith, Lincoln Clifford, KY; Larry Pursel, PA; Trowbridge Farms and Tom Hansen, NY

SIRE: KCF BENNETT B716 F597
KCF BENNETT MONUMENT J338
KCF MISS LANDMARK G301
BOYD 31Z BLUEPRINT 6153

DAM: MOHICAN ROSE 90G ET
RHF 8Y ROSE GARDEN 4067B

- > RUNWAY is an amazing combination of phenotype and balanced genetics.
- > Moderate for frame, RUNWAY is massive in his midsection, stands on a big foot and is thick everywhere.
- > The dam of RUNWAY is a powerful Blueprint daughter who is writing her own story.
- > In today's world where a bull is asked to do just about everything, RUNWAY is a bull you can put on the list.



EPDs as of 7/22/25

	CED	BW	WW	YW	DMI	SC	SCF	MM	M&G	MCE	MCW	UDDER	TEAT	CW	FAT	REA	MARB	BMI\$	BIIS	CHB%
EPD	11.9	-.60	68	104	0.4	1.4	19.3	41	75	8.9	103	1.3	1.2	89	.062	.62	.31	432	531	157
Acc	.34	.5	.45	.46	.50	.42	.30	0.24	-	.31	.31	.4	.42	.10	.10	.10	.10	-	-	-
% Rank	4	50	10	19	68	15	33	2	2	2	78	26	59	8	91	23	13	21	16	8

HOMO. POLLED
A.I. PERMITTED

7HP130 NJW 119E 87G **ENDORSEMENT** 216J

\$25



AHA: 44272851

DOB: 3/7/21

TAT: 216J

FROM: NJW Herefords, WY

SIRE: NJW 133A 6589 MANIFEST 87G ET
BW NJW 76S 8Y HOMESPUN 133A
NJW 76S 88X CIRCLEBOSS 164C ET

DAM: NJW 8B 164C LEXY 119E
NJW 149Z 10W LEXY 8B

- > ENDORSEMENT is a go-to choice for Calving Ease and females that last
- > Excellent calf vigor and below average BW have opened doors for ENDORSEMENT in many heifer projects – and the results are impressive.
- > NJW genetics are known for generating superior females. ENDORSEMENT has what it takes to upgrade the maternal component of any cow herd.



EPDs as of 7/22/25

	CED	BW	WW	YW	DMI	SC	SCF	MM	M&G	MCE	MCW	UDDER	TEAT	CW	FAT	REA	MARB	BMI\$	BIIS	CHB%
EPD	14.7	-1.5	64	94	.40	1.2	24.3	32	63	5	76	1.4	1.4	69	.032	.49	.20	470	561	120
Acc	.55	.85	.74	.70	.20	.49	.35	.32	-	.43	.43	.53	.52	.27	.32	.27	.29	-	-	-
% Rank	2	3	23	42	70	30	6	25	20	13	22	9	13	61	59	46	31	10	10	51

HOMO. POLLED
A.I. PERMITTED

7HP133 RV **VALOR** 9444G ET

\$25



AHA: 44076080

DOB: 3/18/19

TAT: 9444G

FROM: Rausch Herefords and Ravine Creek Ranch, SD
WS ALL-AROUND Z35

SIRE: JDH VICTOR 719T 33Z ET
JDH MS YANKEE 11U ET
ECR L18 EXTRA DEEP 9279

DAM: RV BOBBI 1404
HPH MISS EPTENSION 205 404

- > VALOR is moderate, thick and extremely sure-footed and has garnered respect in both heifers and cows.
- > Expect stout, muscular, dense-bodied offspring and daughters that excel for udder design.
- > A calving ease bull with above average growth and below average MCW are special.
- > VALOR is a trait leader for 11 traits with an emphasis on qualities to make a cow herd better.



EPDs as of 7/22/25

	CED	BW	WW	YW	DMI	SC	SCF	MM	M&G	MCE	MCW	UDDER	TEAT	CW	FAT	REA	MARB	BMI\$	BIIS	CHB%
EPD	12.8	-1.5	61	94	.30	.90	20.2	14	44	1.8	85	1.7	1.7	104	.052	.79	.29	455	546	178
Acc	.65	.88	.81	.81	.21	.73	.44	.49	-	.51	.46	.70	.73	.34	.39	.33	.34	-	-	-
% Rank	3	3	33	44	52	62	26	96	89	47	40	1	1	1	85	7	15	13	13	3

HOMO. POLLED
A.I. PERMITTED

7HP125 CMF 1720

GOLD RUSH 569G ET**\$30**

AHA: 44108010

DOB: 11/27/19

TAT: 569G

FROM: Candy Meadow Farm, TN

SIRE: KCF BENNETT ENCORE Z311 ET
 NJW 79Z Z311 ENDURE 173D ET
 BW 91H 100W RITA 79Z ET
 EFBEEF RESOLUTE CER

DAM: L III TFL C609 VICTORIA 1720
 L III X651 RITA A045


**SCAN
HERE**


- > GOLD RUSH will be one of our sales leaders for years to come. Why? Because our customers love what he does – and he does a lot!
- > As a proven bull, he's still got every Profit Index ranking in the top 1% of the breed. The same goes for his SCF and Marbling EPDs. GOLD RUSH dominated the Hereford NRSP at Olsen Ranch and due to this, he's in use there again as a reference sire.
- > The top 1% CW and breed average MCW – is a great place to be! Expect under control cow size and more payweight when you use GOLD RUSH.


 GOLD RUSH son,
Dry Creek Farms, AL

 GOLD RUSH son,
Sandhill Ranch, KS

 GOLD RUSH daughter,
Candy Meadow Farm, TN

 HOMO. POLLED
A.I. PERMITTED

EPDs as of 7/22/25

	CED	BW	WW	YW	DMI	SC	SCF	MM	M&G	MCE	MCW	UDDER	TEAT	CW	FAT	REA	MARB	BMI\$	BIIS	CHB%
EPD	10.4	1.2	70	104	.60	.80	29.5	28	63	2.6	89	1.4	1.4	101	.052	.86	.77	614	750	214
Acc	.61	.90	.83	.82	.42	.73	.44	.45	-	.55	.45	.71	.71	.54	.54	.53	.54	-	-	-
% Rank	7	20	8	18	90	73	1	45	21	37	49	9	13	2	85	4	1	1	1	1

7HP134 111F **NEXT LEVEL** ET

\$30



AHA: 44439544

DOB: 12/6/22

TAT: K9

FROM: 111 Farms, GA

WHITEHAWK NATURAL 290E

SIRE: WHITEHAWK R GOVERNOR 413H
WHR 5344C 4015 BEEFMAID 610FET

BEHM 100W CUDA 504C

DAM: KCF MISS CUDA E368
KCF MISS ENCORE C559



SCAN
HERE



- > NEXT LEVEL is a moderate, thick young sire bred with an emphasis on growth and end-product merit.
- > Ranking in the top 1% of the breed for both Carcass Weight and Marbling, let NEXT LEVEL fetch you with bigger checks due to more pounds and higher grades.
- > An outcross to many pedigrees, NEXT LEVEL offers a powerful skeletal design along with high-end performance.

EPDs as of 7/22/25

	CED	BW	WW	YW	DMI	SC	SCF	MM	M&G	MCE	MCW	UDDER	TEAT	CW	FAT	REA	MARB	BMI\$	BII\$	CHB%
EPD	4.6	2.1	80	135	0.7	1.6	17.9	34	74	5.5	93	1.3	1.3	114	.052	.90	.73	462	598	235
Acc	.31	.47	.43	.43	.14	.36	0.29	.24	-	.31	.33	.42	.42	.10	.10	0.1	0.1	-	-	-
% Rank	40	37	1	1	94	6	46	13	2	10	59	26	32	1	85	3	1	11	5	1

HOMO. POLLED
A.I. PERMITTED

7HP132 RST 505 SMALL TOWN **KID 9023** \$30



AHA: 44039432

DOB: 2/6/19

TAT: 9023

FROM: Thomas Herefords, MT

NJW 73S W18 HOMETOWN 10Y ET

SIRE: KT SMALL TOWN KID 5051
KT MS 0124 TIMES A WASTIN 2086

RST X51 REVOLUTION 4180

DAM: RST MS 4180 REVOLUTION 7054
RST MS X651 TESTED 5079



SCAN
HERE



- > As a trait leader for a total of 14 traits, KID 9023 displays genetics that perform in any program of any breed.
- > Pay close attention to his data, every carcass trait puts him in the top 5% of the breed and his blend of CED and growth is phenomenal. Then add extras like SC and TEAT and UDDR in the top 1% - wow!
- > KID 9023 is a big, strong, good-footed, squarely-designed bull. His daughters are just like you'd expect. They look good, they raise heavy calves, and they do it with style.

EPDs as of 7/22/25

	CED	BW	WW	YW	DMI	SC	SCF	MM	M&G	MCE	MCW	UDDER	TEAT	CW	FAT	REA	MARB	BMI\$	BII\$	CHB%
EPD	9	.10	77	109	.90	1.9	21.4	31	69	-.70	103	1.7	1.8	102	.032	.90	.46	474	592	176
Acc	.54	.82	.69	.70	.20	.61	.37	.38	-	.44	.37	.57	0.59	.17	.19	.17	.18	-	-	-
% Rank	11	9	2	11	99	2	18	30	6	77	78	1	1	2	59	3	4	9	6	3

HOMO. POLLED
A.I. PERMITTED

7HP128 BIRDWELL **RED BIRD** 7098 0558ET \$25



AHA: 44254851

DOB: 11/04/20

TAT: 0558

FROM: Birdwell Ranch, OK

R LEADER 6964

SIRE: CHURCHILL RED BARON 8300F ET
CHURCHILL LADY 500C ET

EFBEEF BR VALIDATED B413

DAM: BR VALIDATED B413 6035 7098
BR BENNETT 4R Y428 2101 6035



SCAN
HERE



- > RED BIRD'S dam, 7098, is the cow many consider to be the best cow in the Hereford business today.
- > His shot of Tested X651 helps boost his suite of carcass traits.
- > The AHA reports data for 20 traits. REDBIRD ranks in the top 25% of the breed or higher for 15 of the 20 and he's a trait leader for 11 of them!
- > RED BIRD'S Profit Indexes are all high, representing genetics to perform in a variety of environments and scenarios.


EPDs as of 7/22/25


	CED	BW	WW	YW	DMI	SC	SCF	MM	M&G	MCE	MCW	UDDER	TEAT	CW	FAT	REA	MARB	BMI\$	BII\$	CHB%
EPD	8.5	-1.4	63	102	.30	1.5	26.1	25	57	5.8	74	1.6	1.6	69	.062	.59	.53	517	630	155
Acc	.52	.83	.73	.73	.41	.55	.34	.39	-	.42	.39	.55	.56	.52	.51	.48	.50	-	-	-
% Rank	14	3	25	23	64	10	3	64	48	9	19	1	1	63	91	28	3	3	3	9

HOMO. POLLED
A.I. PERMITTED

ALL AVAILABLE HEREFORD SIREs

HEREFORD - Sorted by name

HERFORD Sorted by name				CE		BW		WW		YW		DMI		SC		MM		M&G		MCE		MCW		UDDER		TEAT		CW		FAT		REA		MARB		BMI\$		BII\$		CH\$	
Code No.	Reg No.	Code Name		EPD	Acc	EPD	Acc	EPD	Acc	EPD	Acc	EPD	Acc	EPD	Acc	EPD	Acc	EPD	Acc	EPD	Acc	EPD	Acc	EPD	Acc	EPD	Acc	EPD	Acc	EPD	Acc	EPD	Acc	EPD	Acc	EPD	Acc	EPD	Acc	EPD	Acc
7HP131	44334194	ADVENTURE	YES	12.2	.34	-0.8	.73	53	.62	86	.56	0.1	.18	1.1	.43	34	.29	61	7.3	.35	71	.31	1.5	.45	1.4	.44	74	.23	.012	.27	.48	.23	.17	.25	438	515	135				
7HP127	44135081	CERTIFIED	NO	6.5	.38	1.4	.68	64	.55	95	.56	0.5	.17	1.1	.47	33	.28	65	0.8	.35	50	.34	1.5	.48	1.5	.48	71	.32	.092	.36	.56	.31	.50	.33	382	489	142				
7HP120	43636764	CUDA	YES	9.7	.78	-0.5	.94	69	.90	110	.89	0.4	.60	1.1	.81	37	.77	72	2.5	.73	65	.73	1.3	.87	1.2	.88	69	.67	-.008	.65	.54	.65	.48	.65	255	358	159				
7HP130	44272851	ENDORSEMENT	YES	14.7	.55	-1.5	.85	64	.74	94	.70	0.4	.20	1.2	.49	32	.32	63	5.0	.43	76	.43	1.4	.53	1.4	.52	69	.27	.032	.32	.49	.27	.20	.29	470	561	120				
7HP120	43793570	EVERSTONE	YES	-3.7	.44	3.9	.81	79	.73	129	.73	0.6	.44	2.4	.65	34	.49	73	-2.7	.48	113	.58	1.4	.69	1.4	.69	96	.56	-.008	.54	.79	.53	.13	.55	401	496	157				
7HP116	43292949	EXCEDE	YES	7.0	.74	0.1	.92	59	.88	102	.87	0.2	.49	1.4	.77	33	.78	62	-3.8	.72	89	.74	1.5	.87	1.5	.87	71	.59	.022	.60	.16	.58	.07	.59	479	559	119				
7HP125	44108010	GOLD RUSH	YES	10.4	.61	1.2	.90	70	.83	104	.82	0.6	.42	0.8	.73	28	.45	63	2.6	.55	89	.45	1.4	.71	1.4	.71	101	.54	.052	.54	.86	.53	.77	.54	614	750	214				
7HP122	43829334	HISTORIC	YES	5.1	.77	0.1	.93	56	.88	84	.87	0.0	.20	0.8	.78	45	.75	73	-3.3	.71	77	.74	1.4	.85	1.5	.86	72	.51	.062	.57	.92	.50	.12	.53	541	620	122				
7HP132	44039432	KID 9023	YES	9.0	.54	0.1	.82	77	.69	109	.70	0.9	.20	1.9	.61	31	.38	69	-0.7	.44	103	.37	1.7	.57	1.8	.59	102	.17	.032	.19	.90	.17	.46	.18	474	592	176				
7HH59	43481878	MASTERPIECE	YES	12.5	.37	-2.6	.78	56	.70	92	.71	0.5	.20	0.7	.60	35	.43	63	10.9	.43	108	.41	1.2	.57	1.2	.57	92	.22	.062	.26	.80	.22	.12	.25	380	453	140				
7HP134	44439544	NEXT LEVEL	YES	4.6	.31	2.1	.47	80	.43	135	.43	0.7	.14	1.6	.36	34	.24	74	5.5	.31	93	.33	1.3	.42	1.3	.42	114	.10	.052	.10	.90	.10	.73	.10	462	598	235				
7HP124	44004782	POWER SURGE	YES	6.7	.52	3.0	.86	69	.77	106	.73	0.3	.20	1.6	.60	37	.46	72	1.3	.51	89	.46	1.5	.70	1.4	.71	84	.32	.032	.37	.79	.31	-.15	.34	393	461	111				
7HP128	44254851	REDBIRD	YES	8.5	.52	-1.4	.83	63	.73	102	.73	0.3	.41	1.5	.55	25	.39	57	5.8	.42	74	.39	1.6	.55	1.6	.56	69	.52	.062	.51	.59	.48	.53	.50	517	630	155				
7HP136	44552328	RUNWAY	NO	11.9	.34	-0.6	.50	68	.45	104	.46	0.4	.15	1.4	.42	41	.24	75	8.9	.31	103	.31	1.3	.40	1.2	.42	89	.10	.062	.10	.62	.10	.31	.10	432	531	157				
7HP126	44140749	SLEEP ON	YES	14.2	.50	-2.3	.80	57	.67	85	.65	0.0	.19	0.9	.52	40	.33	68	-0.9	.39	69	.41	1.4	.53	1.4	.54	59	.28	.032	.35	.17	.26	.36	.29	400	493	130				
7HP133	44076080	VALOR	YES	12.8	.65	-1.5	.88	61	.81	94	.81	0.3	.21	0.9	.73	14	.49	44	1.8	.51	85	.46	1.7	.70	1.7	.73	104	.34	.052	.39	.79	.33	.29	.34	455	546	178				

AHA EPDs as of 7/22/25  = Canadian availability



7HP126 SLEEP ON



7HP124 POWER SURGE

ALL AVAILABLE CHAROLAIS SIREs

CHAROLAIS - Sorted by name

Code No.	Reg No.	Name	CAN	CE		BW		WW		YW		MILK		MCE		SC		UDDER		TEAT		CW		REA		FAT		MARB		TSI	
				EPD	Acc	EPD	Acc	EPD	Acc	EPD	Acc	EPD	Acc	EPD	Acc	EPD	Acc	EPD	Acc	EPD	Acc	EPD	Acc	EPD	Acc	EPD	Acc	EPD	Acc	EPD	Acc
7CH124	EM1000906	BUCKSHOT	NO	11.6	.21	-0.9	.40	83	.25	136	.21	36	.14	10.6	.13	0.9	.13	1.34	.07	1.37	.07	39	.12	1.18	.12	.010	.10	.29	.09	304.24	
7CH123	M1004701	EXPLOSION	NO	11.6	.27	-1.0	.42	74	.32	129	.22	42	.19	8.9	.19	1.4	.16	1.11	.16	1.08	.16	52	.18	0.90	.19	.059	.17	.24	.15	310.21	
9CH106	M920346	FOREMAN	NO	17.2	.30	-3.5	.43	67	.32	121	.31	18	.21	8.4	.18	1.3	.27	1.33	.17	1.29	.17	22	.19	0.72	.19	.027	.17	.31	.15	272.53	
9CH99	M917926	FREE RIDE	YES	16.6	.29	-5.7	.43	51	.33	101	.21	13	.23	6.4	.21	0.7	.15	1.30	.10	1.36	.10	11	.13	0.57	.13	.019	.11	.26	.10	252.24	
7CH114	EM965421	HISTORIC	YES	17.1	.37	-3.4	.56	80	.29	155	.27	24	.16	12.5	.18	1.8	.20	1.12	.17	0.99	.17	38	.16	1.13	.15	.047	.14	.23	.12	298.22	
9CH107	M920348	HONCHO	NO	16.7	.39	-3.6	.51	60	.32	122	.31	15	.21	6.6	.18	1.4	.27	1.11	.17	1.01	.17	20	.18	0.52	.19	.035	.17	.27	.15	262.11	
9CH103	M910612	LEAD TIME	YES	11.1	.60	-4.5	.75	49	.61	103	.44	33	.22	-0.3	.26	1.6	.34	1.38	.33	1.26	.33	24	.23	0.65	.23	.027	.20	.31	.17	271.11	
9CH119	EM990995	MEDIATOR	YES	11.7	.22	-2.1	.39	66	.24	120	.23	34	.16	5.2	.16	1.7	.18	1.12	.20	1.03	.20	32	.13	0.98	.13	.019	.12	.24	.11	287.30	
9CH104	M924068	NEW MAN IN TOWN	YES	19.0	.53	-2.7	.71	64	.47	111	.42	29	.26	17.2	.27	1.4	.30	1.28	.31	1.25	.30	23	.25	0.73	.25	.056	.23	.46	.23	278.19	
9CH105	EM932228	SILVERSMITH	NO	7.5	.50	-0.2	.78	74	.62	118	.54	14	.25	13.0	.25	2.1	.33	1.01	.28	1.01	.28	38	.25	1.16	.24	-.020	.22	.45	.18	310.86	

EPDs as of 7/22/25  = Canadian availability



9CH119 MEDIATOR



9CH103 LEAD TIME

7CH114 SVY **HISTORIC** 241K

\$30



photo reversed

ACA: EM965421

DOB: 2/2/22

TAT: 241K

FROM: Dennis Serhienko, SK, Canada

BROBERG'S RSOURCE D20

SIRE: LT COUNTDOWN 9712 PLD

LT MADELINE 6113 PLD

M6 NEW STANDARD 842 P ET

DAM: M6 MS NEW GERMAINE 484 P

M6 COOL GERMAINE 1145 P ET



SCAN
HERE



- > Most popular Charolais sire to enter the Select Sires lineup in some time! His calves are extremely impressive for both phenotype and performance.
- > His phenotype is unmatched, but his data is equally as impressive ranking in the top 10% or better for CE, WW, YW, SC, CW, REA and TSI.
- > No, he is not off the market and yes, he does have a tendency to throw some "off" color calves, but breeders are impressed with the type and quality.

EPDs as of 7/22/25

	CE	BW	WW	YW	MILK	MCE	MTL	SC	UDDER	TEAT	DOC	CW	REA	FAT	MARB	TSI
EPD	17.1	-3.4	80	155	24	12.5	64	1.8	1.12	0.99	6.5	38	1.13	0.047	0.23	298.22
Acc	0.37	0.56	0.29	.27	0.16	0.18	-	0.2	0.17	0.17	.35	0.16	0.15	0.14	0.12	-
% Rank	9	20	7	3	50	20	20	6	50	75	80	5	3	100	20	7

HOMO. POLLED

7CH123 WC **EXPLOSION** 4322 P

\$30



NEW

ASA: M1004701

DOB: 2/6/24

TAT: 4322

FROM: Wright Charolais, MO

LT RUSHMORE 8060 PLD

SIRE: WC INFERNO 6561 P

WC ASTA 0505 P

WC VISIONARY 7254 P

DAM: WC CLARICE 9349 P

WC CLARICE 4111 P ET



- > EXPLOSION was a member of the 2025 Champion Pen of 3 at the NWSS but he is more than just a phenotype sire. His EPD profile is pretty elite as he ranks in the top 2% for TSI as well as the top 20% or better for WW, YW, MILK, SC, CW, REA and MARB.
- > Very complete and balanced with excellent structure, EXPLOSION offers the perfect balance of phenotype and genotype.
- > Check with representative about availability.

EPDs as of 7/22/25

	CE	BW	WW	YW	MILK	MCE	MTL	SC	UDDER	TEAT	DOC	CW	REA	FAT	MARB	TSI
EPD	11.6	-1	74	129	42	8.9	79	1.4	1.11	1.08	22.7	52	0.9	0.059	0.24	310.21
Acc	0.27	0.42	0.32	.22	0.19	0.19	-	0.16	0.16	0.16	.35	0.18	0.19	0.17	0.15	-
% Rank	50	55	15	20	1	60	1	20	65	65	15	1	15	100	20	2

HOMO. POLLED

CH124 DESCO **BUCKSHOT** 4166

\$30



NEW

ASA: EM1000906

DOB: 4/15/24

TAT: 416

FROM: Desco Charolais Farm, PA

M6 NEW STANDARD 545 P ET

SIRE: SCHURRTOP BEEFMAKER 9598 P

SCHURRTOP M 2829 8667 P

EATONS PORTION 40011 POLLED

DAM: EATONS MISS DAVIDELL 81268 P

EATONS MISS DAVIDELL 50779



SCAN
HERE



- > New for 2025, BUCKSHOT is a true genetic gem ranking in the top 10% or better for WW, YW, MILK, TEAT, CW, REA and MARB which leads to a top 3% rank for TSI.
- > BUCKSHOT is ideal in his size with yearling frame score of 6.2, and offers extra muscle mass as well as added depth of body. He is very docile and easy to handle.
- > He is homozygous polled with exceptional phenotype, incredible data and actual performance! Combine that with his Udder and Teat predictions and BUCKSHOT is an easy sire to recommend and use!

EPDs as of 7/22/25

	CE	BW	WW	YW	MILK	MCE	MTL	SC	UDDER	TEAT	DOC	CW	REA	FAT	MARB	TSI
EPD	11.6	-0.9	83	136	36	10.6	77	0.9	1.34	1.37	-	39	1.18	0.01	0.29	304.24
Acc	0.21	0.4	0.25	.22	0.14	0.13	-	0.13	0.07	0.07	-	0.12	0.12	0.1	0.09	-
% Rank	50	55	4	10	4	40	1	65	15	5	-	8	1	40	8	3

HOMO. POLLED

BEEF SPECIALISTS



1. Clint Sexson
Stanfield, OR
(541) 609-0167
csexson@ssmcoop.com



2. Morgan Johnsrud
Jordan Valley, OR
(701) 570-9663
mjohnsrud@ssmcoop.com



3. Will Shirley
Dillon, MT
(406) 576-0125
wshirley@ssmcoop.com



4. Jeremy Kueffler
Miles City, MT
(406) 951-0348
jkueffler@ssmcoop.com



5. Jerald Raymond
Menan, ID
(208) 317-8777
jraymond@ssmcoop.com



6. Jay Nansel
Billings, MT
(406) 698-6711
jnansel@ssmcoop.com



7. Matt Britton
Wheatland, WY
(307) 331-4977
mbritton@ssmcoop.com



8. Tim Olson
St. Onge, SD
(605) 641-5966
tolson@ssmcoop.com



9. Greg Miller
Summit, SD
(605) 880-3592
gmiller@ssmcoop.com



10. Stuart Rasmussen
Rushville, NE
(308) 360-1362
srasmussen@ssmcoop.com



11. Jon Herrick
Amherst, NE
(308) 627-6431
jherrick@selectsires.com



12. Jay Hill
Sterling, CO
(970) 520-1555
jhill@ssmcoop.com



13. Brad Unrau
Pryor, OK
(918) 798-9184
bunrau@ssmcoop.com



14. Dan Curtin
Elida, NM
(928) 368-3634
dcurtin@ssmcoop.com



15. Jim Ray
Salem, OH
(614) 205-7176
jray@ssmcoop.com



16. Kevin Hinds
Newcomerstown, OH
(614) 205-7173
khinds@ssmcoop.com



17. StanLee Grobosky
Alexis, IL
(309) 749-7788
sgrobosky@ssmcoop.com



18. Adam Wood
Ithaca, MI
(989) 763-6600
adam.wood@mycentralstar.com



20. Dan Busch
Columbia, MO
(573) 289-2058
dbusch@ssmcoop.com



21. Matt Drake
Freeman, MO
(816) 738-1825
mdrake@ssmcoop.com



22. Dan Johnson
Louisville, KY
(502) 905-8221
djohnson@ssmcoop.com



23. Matt Caldwell
Parker, KS
(913) 755-1105
mcaldwell@premierselect.com



24. Jim Yance
Dothan, AL
(334) 726-7342
jyance@premierselect.com



25. Jerry Emerich
Moers, NY
(518) 593-0212
Jerryemerich@gmail.com



26. Scott Ellevold
Emerald, WI
(715) 781-5635
scott.ellevold@mycentralstar.com



27. Mark Wilburn
Asheboro, NC
(336) 465-2417
mwilburn@premierselect.com



28. Patrick Schumacher
Linton, ND
(701) 321-3275
pschumacher@ssmcoop.com



29. Carson Oney
Fallon, NV
(512) 695-0003
coney@ssmcoop.com

LOCATE YOUR BEEF SPECIALIST USING THE MAP!



YOUR SUCCESS *Our Passion.*

Select Sires, Inc.
11740 U.S. 42 North
P.O. Box 143,
Plain City, OH 43064-0143

SELECT SIRES INC.

A FEDERATION OF THREE FARMER-OWNED AND-CONTROLLED COOPERATIVES

CENTRALSTAR COOPERATIVE

Wisconsin Office
P.O. Box 191
Waupun, WI 53963
Michigan Office
P.O. Box 23157
Lansing, MI 48909
Phone: (800) 631-3510
E-mail: info@mycentralstar.com
www.mycentralstar.com
Serving Wisconsin, Michigan,
Indiana (north of U.S. 50)
Phillip Dieter, chief executive officer

PREMIER SELECT SIRES, INC.

Main Business Office
1 Stony Mountain Road
Tunkhannock, PA 18657
Phone: (800) 227-6417 / (570) 836-3168
Fax: (570) 836-1490
Mark Carpenter, chief executive officer
Email: office@premierselect.com
www.premierselectsires.com
Serving Alabama, Arkansas, Connecticut,
Delaware, Eastern Pennsylvania,
Eastern West Virginia, Florida, Georgia,
Kansas, Louisiana, Maine, Maryland,
Massachusetts, Mississippi, New
Hampshire, New Jersey, New York, North
Carolina, Rhode Island, South Carolina,
Tennessee, Vermont, Virginia

SELECT SIRES MEMBER COOPERATIVE

Main Business Office
1224 Alton Darby Creek Rd
Columbus, OH 43228
Phone: (614) 878-5333
Fax: (614) 870-2622
Email: ssmc@ssmcoop.com
www.ssmcoop.com

SSMC West Business Office
833 West 400 North
Logan, UT 84321
Phone: (435) 752-2022 / (800) 421-9245
Fax: (435) 752-2097

SSMC Sire Services

41W 394 US Highway 20
Hampshire, IL 60140
Phone: (847) 464-5281
Fax: (847) 464-4088
CA Distribution Center
P.O. Box 1803
Turlock, CA 95381
Phone: (209) 667-8378 / (800) 278-8254
Fax: (209) 667-8379

MN Distribution Center

6601 Gregory Park Road
St. Cloud, MN 56301
Phone: (320) 259-6680 / (800) 795-1233
Chris Sigurdson, chief executive officer

Devin Albrecht, V.P. of Operations and
Talent Management/Beef Sector Market
Manager

Brad Meek, Area 1 Director, serving Idaho,
Oregon, Montana, Washington and Wyoming

Murray Sinclair, Area 2 Director, serving
Iowa, Minnesota, Nebraska, North Dakota,
South Dakota

Chris Lahmers, Area 3 Director & Mexico
Director, serving Illinois, Southern
Indiana, Kentucky, Ohio, Missouri, West
Pennsylvania, Western West Virginia

Rory White, Area 4 Director, serving
Arizona, California, Nevada, Utah

Rodney Wegener, Area 5 Director, serving
Colorado, New Mexico, Oklahoma, Texas

EUROPE, ASIA, AFRICA AND OCEANIA WORLD WIDE SIRES LTD.

5545 Avenida de los Robles
Visalia, CA 93291
Phone: (559) 622-2222
Fax: (559) 741-2828
Email: info@wwsires.com
www.wwsires.com

CENTRAL AND SOUTH AMERICA

SELECT SIRES/LATIN AMERICA
Juan Pablo Muriel E-mail: murielJ@selectsires.com
Juan Pablo Barreto
Email: jpbarreto@selectsires.com

MEXICO

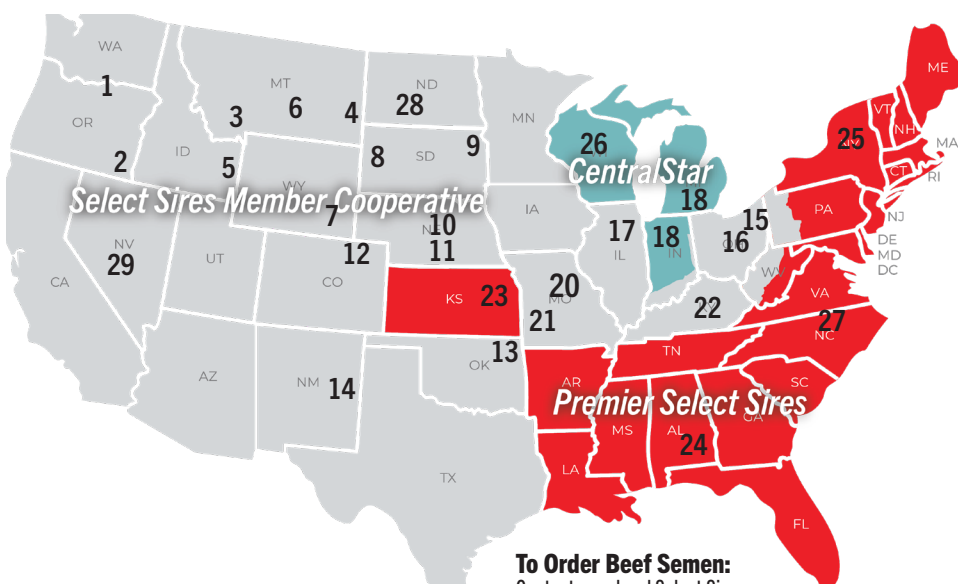
SELECT SIRES MEMBER COOPERATIVE

Dr. Fernando Alvarez
Av. Constituyentes Ote. #40, int. B-301
Queretaro, Qro Mexico 76040
Cell Phone: 52 1 442 219 2025
Fax: 52 1 442 277 5336
Email: falvarez@ssmcoop.com

CANADA

SELECT SIRES CANADA

Howard Hamilton, general manager
RR 3 P.O. Box 489 / 2 Industrial Road
Kemptville, Ontario K0G 1J0
Phone: (613) 258-3800
Fax: (613) 258-7257
www.selectsirescanada.com



BEEF SPECIALISTS

LOCATE YOUR BEEF SPECIALIST USING THE MAP BELOW.
BEEF SPECIALISTS CAN BE FOUND ON PAGE 47.

To Order Beef Semen:

Contact your local Select Sires
representative or beef specialist or visit www.selectsiresbeef.com

To Order A.I. Certificates:

Visit www.selectsiresbeef.com, www.accelgen.com or call (800) 251-3049.

Product of the USA